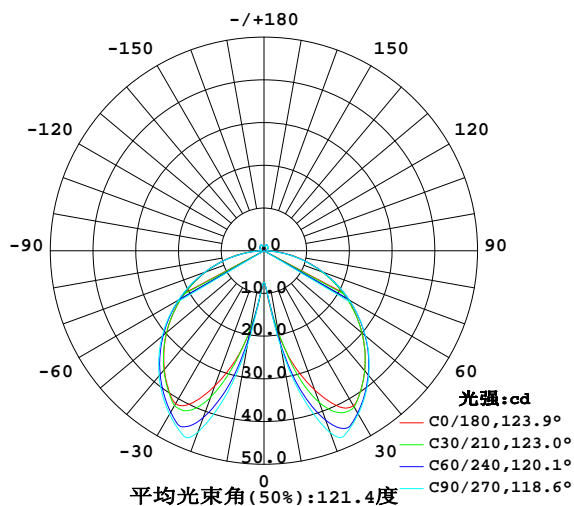


室内灯具光度数据

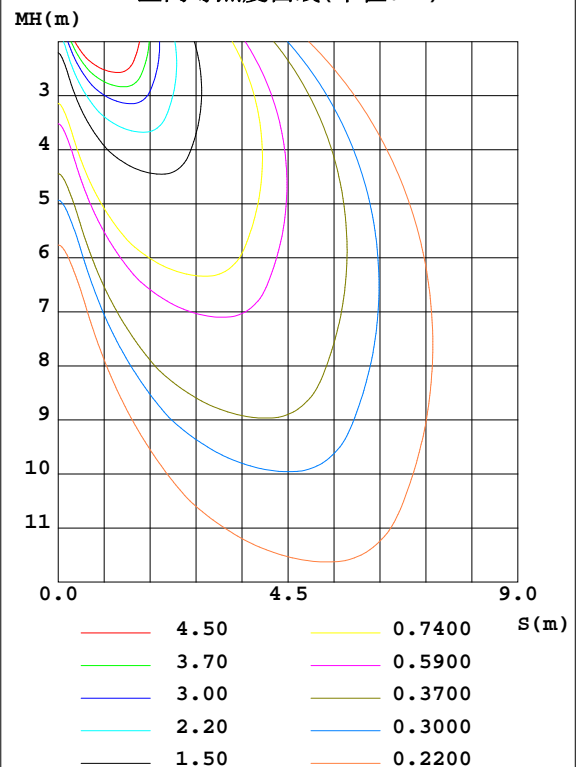
实测参数: U:230.3V I:0.0615A P:5.979W PF:0.4225 实检光通:144.923x1 lm		
灯具名称: Linear 台灯	灯具类型:	灯具重量:
外型尺寸:	灯具规格:	测试编号:202000605A0002
制造厂商: TARGET	发光口面:0.22*0.1	保护角:

光源数据		光度数据				光效: 24.24 lm/W
型号	Linear Table Lamp	峰值光强(cd)	47.37	S/MH(C0/180)	2.81	
标称功率(W)	6	灯具效率(%)	100.0	S/MH(C90/270)	2.81	
额定电源电压(V)	230	总光通量(lm)	144.92	η UP,DN(C0-180)	2.3,47.7	
额定光通量(lm)	144.923	CIE分类	直接	η UP,DN(C180-360)	2.3,47.7	
灯具内光源数(只)	1	上射光通比(%)	4.6	CIBSE SHR NOM	0.75	
实测电源电压(V)	230.3	下射光通比(%)	95.4	CIBSE SHR MAX	0.90	

室内灯具配光曲线



空间等照度曲线(单位:lx)



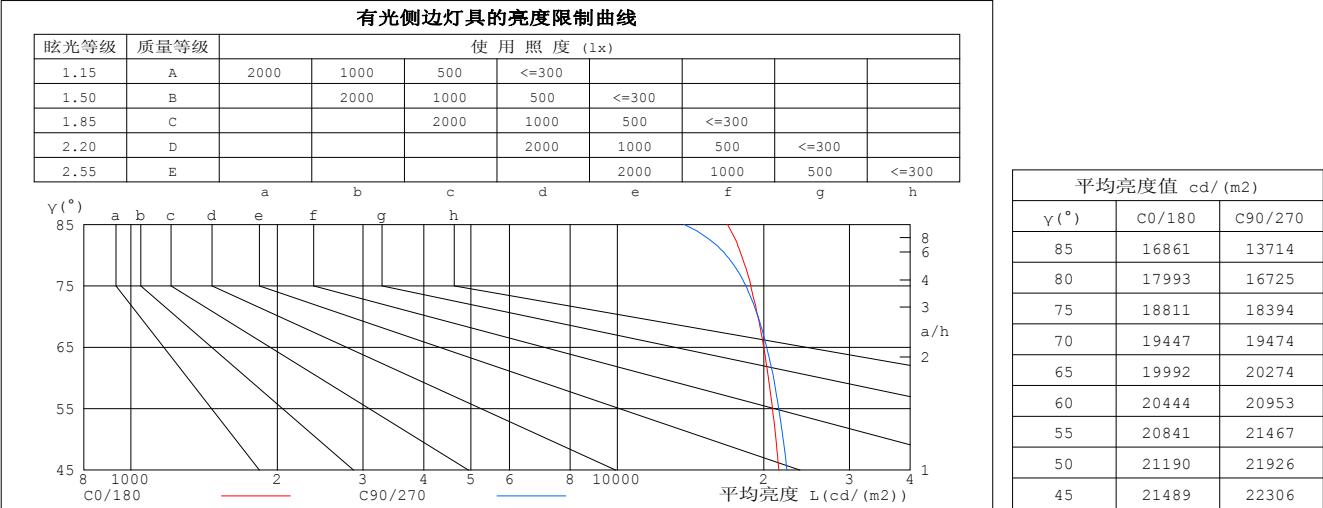
C角度范围: 0度 - 360度
C角度间隔: 5.0度
测试速度: 快速
环境温度: 25℃
测试人员: yechihong
测试日期: 2020-06-05

Y角度范围: 0度 - 180度
Y角度间隔: 0.5度
测试系统: 远方(EVERFINE)GO-2000A_V1系统 V2.0.272
环境湿度: 70%
测试距离: 8.425米 [K=1.0000]
备注:

灯具环带光通量和亮度限制曲线

环带光通量：

γ	C0	C45	C90	C135	C180	C225	C270	C315	γ(°)	Φ环	Φ总	§lum, lamp
5	11.41	10.53	10.56	10.39	10.81	10.52	10.44	10.41	0- 5	0.2145	0.2145	0.15,0.15
10	19.99	19.93	22.88	18.82	18.99	19.03	22.41	19.68	5- 10	1.116	1.331	0.92,0.92
15	28.15	32.20	35.89	30.83	27.01	31.02	35.44	31.85	10- 15	3.136	4.466	3.08,3.08
20	34.65	39.89	45.29	38.97	33.65	39.13	45.11	39.66	15- 20	5.908	10.37	7.16,7.16
25	39.92	43.61	46.54	42.96	39.14	43.19	46.61	43.35	20- 25	8.788	19.16	13.2,13.2
30	41.88	43.31	44.13	42.87	41.32	42.94	44.19	43.19	25- 30	10.97	30.13	20.8,20.8
35	39.60	40.61	41.31	40.19	39.18	40.22	41.37	40.44	30- 35	12.25	42.39	29.2,29.2
40	36.66	37.56	38.15	37.16	36.28	37.18	38.20	37.39	35- 40	12.93	55.32	38.2,38.2
45	33.43	34.23	34.70	33.87	33.11	33.88	34.79	34.08	40- 45	13.17	68.49	47.3,47.3
50	29.97	30.66	31.01	30.32	29.72	30.30	31.09	30.49	45- 50	12.99	81.48	56.2,56.2
55	26.30	26.85	27.09	26.56	26.09	26.53	27.23	26.71	50- 55	12.39	93.87	64.8,64.8
60	22.49	22.90	23.05	22.65	22.36	22.62	23.16	22.76	55- 60	11.39	105.3	72.6,72.6
65	18.59	18.86	18.85	18.65	18.52	18.61	19.01	18.73	60- 65	10.06	115.3	79.6,79.6
70	14.63	14.76	14.65	14.58	14.63	14.51	14.80	14.66	65- 70	8.427	123.8	85.4,85.4
75	10.71	10.67	10.47	10.51	10.74	10.46	10.62	10.58	70- 75	6.576	130.3	89.9,89.9
80	6.874	6.654	6.389	6.531	6.938	6.484	6.548	6.597	75- 80	4.590	134.9	93.1,93.1
85	3.233	2.907	2.630	2.804	3.318	2.777	2.767	2.868	80- 85	2.568	137.5	94.9,94.9
90	0.7880	0.7378	0.7201	0.7288	0.7062	0.6844	0.6610	0.6980	85- 90	0.8108	138.3	95.4,95.4
95	0.7559	0.7471	0.7152	0.7425	0.7107	0.6790	0.7018	0.6926	90- 95	0.3909	138.7	95.7,95.7
100	0.7469	0.7878	0.7423	0.7787	0.7424	0.7107	0.7515	0.7152	95-100	0.3953	139.1	96.96
105	0.7696	0.8513	0.8098	0.8468	0.7968	0.7785	0.8286	0.7741	100-105	0.4130	139.5	96.3,96.3
110	0.8420	0.9326	0.8873	0.9281	0.8694	0.8553	0.9100	0.8510	105-110	0.4395	139.9	96.6,96.6
115	0.9233	1.014	0.9686	1.010	0.9463	0.9548	0.9915	0.9325	110-115	0.4668	140.4	96.9,96.9
120	1.018	1.100	1.055	1.100	1.041	1.045	1.078	1.036	115-120	0.4894	140.9	97.2,97.2
125	1.104	1.191	1.141	1.186	1.127	1.114	1.164	1.105	120-125	0.5052	141.4	97.6,97.6
130	1.199	1.272	1.231	1.272	1.218	1.195	1.245	1.191	125-130	0.5138	141.9	97.9,97.9
135	1.290	1.358	1.322	1.354	1.308	1.285	1.335	1.272	130-135	0.5123	142.4	98.3,98.3
140	1.380	1.440	1.399	1.435	1.399	1.371	1.417	1.362	135-140	0.5017	142.9	98.6,98.6
145	1.471	1.512	1.471	1.517	1.471	1.462	1.494	1.435	140-145	0.4796	143.4	99.99
150	1.485	1.544	1.543	1.535	1.453	1.525	1.575	1.503	145-150	0.4421	143.8	99.3,99.3
155	1.431	1.471	1.571	1.476	1.358	1.530	1.575	1.499	150-155	0.3827	144.2	99.5,99.5
160	1.273	1.326	1.499	1.322	1.209	1.390	1.466	1.349	155-160	0.3010	144.5	99.7,99.7
165	1.033	1.109	1.295	1.113	0.9773	1.187	1.258	1.141	160-165	0.2070	144.7	99.9,99.9
170	0.7653	0.8412	1.028	0.8504	0.7145	0.9283	1.005	0.8786	165-170	0.1211	144.9	100.100
175	0.4980	0.5833	0.7199	0.5652	0.4569	0.6429	0.6880	0.6248	170-175	0.0535	144.9	100.100
180	0.3667	0.3712	0.3848	0.3667	0.3621	0.3803	0.3803	0.3667	175-180	0.0124	144.9	100.100
单位:° 光强:cd MAX (Ii - Iavg) / Iavg (0-135) = 188.2 %										单位:lm		



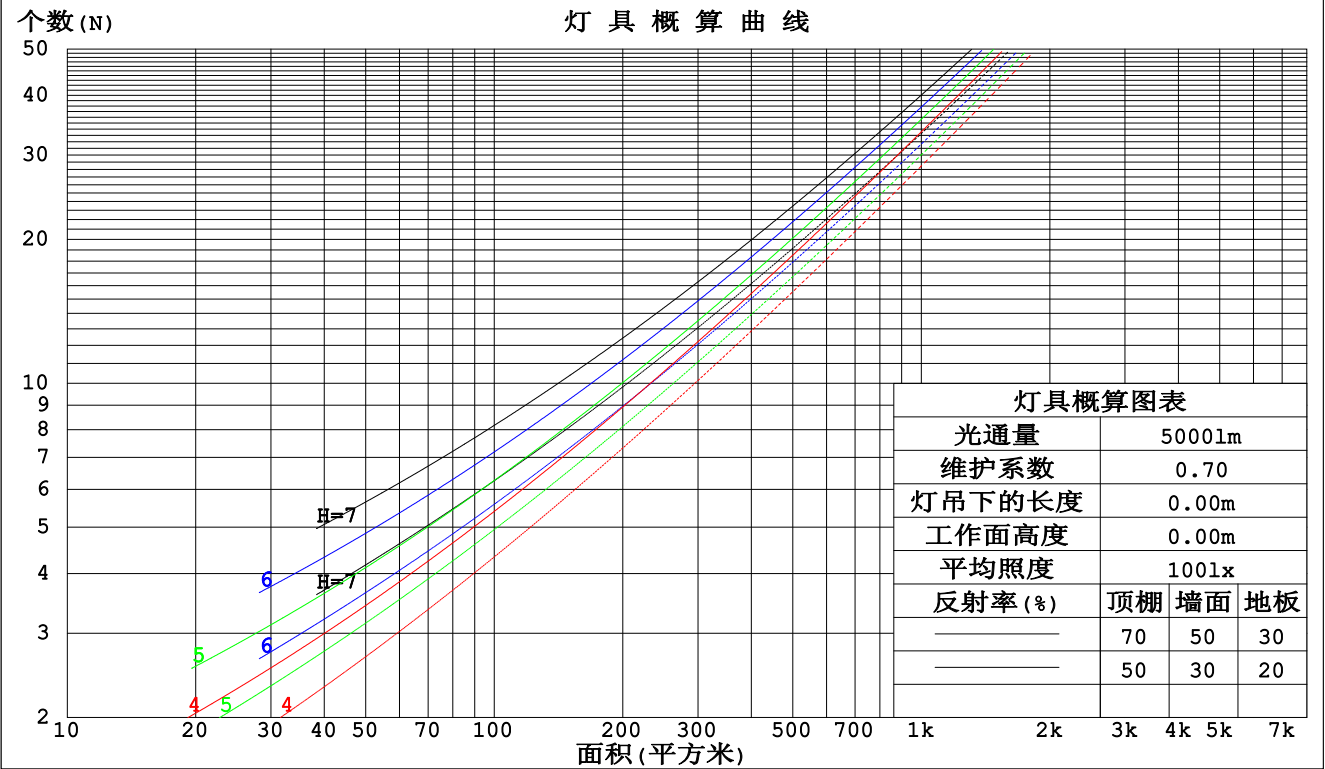
C角度范围： 0度 - 360度
C角度间隔： 5.0度
测试速度：快速
环境温度:25℃
测试人员:yechihong
测试日期:2020-06-05

γ角度范围： 0度 - 180度
γ角度间隔： 0.5度
测试系统：远方(EVERFINE)GO-2000A_v1系统 V2.0.272
环境湿度:70%
测试距离:8.425米 [K=1.0000]
备注：

工作面利用系数和灯具概算曲线

实测参数: U:230.3V I:0.0615A P:5.979W PF:0.4225 实检光通:144.923x1 lm		
灯具名称: Linear 台灯	灯具类型:	灯具重量:
外型尺寸:	灯具规格:	测试编号:202000605A0002
制造厂商: TARGET	发光口面:0.22*0.1	保护角:

顶棚	80%			70%			50%			30%			10%			0
墙面	50%	30%	10%	50%	30%	10%	50%	30%	10%	50%	30%	10%	50%	30%	10%	0
地板	20%			20%			20%			20%			20%			0
室空间比	工 作 面 利 用 系 数															
0.0	1.18	1.18	1.18	1.15	1.15	1.15	1.09	1.09	1.09	1.03	1.03	1.03	.98	.98	.98	.95
1.0	1.02	.97	.93	.99	.95	.91	.94	.91	.88	.89	.87	.84	.85	.83	.81	.78
2.0	.88	.81	.75	.86	.79	.73	.81	.76	.71	.77	.73	.69	.74	.70	.66	.64
3.0	.76	.68	.61	.74	.67	.60	.71	.64	.58	.67	.62	.57	.64	.59	.55	.53
4.0	.67	.58	.51	.65	.57	.50	.62	.55	.49	.59	.53	.48	.57	.51	.47	.44
5.0	.59	.50	.43	.58	.49	.43	.55	.48	.42	.53	.46	.41	.50	.45	.40	.38
6.0	.53	.44	.37	.52	.43	.37	.49	.42	.36	.47	.40	.35	.45	.39	.34	.32
7.0	.48	.38	.32	.46	.38	.32	.45	.37	.31	.43	.36	.31	.41	.35	.30	.28
8.0	.43	.34	.28	.42	.34	.28	.40	.33	.27	.39	.32	.27	.37	.31	.26	.24
9.0	.39	.31	.25	.38	.30	.25	.37	.29	.24	.35	.29	.24	.34	.28	.23	.22
10.0	.36	.28	.22	.35	.27	.22	.34	.27	.22	.32	.26	.21	.31	.25	.21	.19



C角度范围: 0度 - 360度
C角度间隔: 5.0度
测试速度: 快速
环境温度:25℃
测试人员:yechihong
测试日期:2020-06-05

γ角度范围: 0度 - 180度
γ角度间隔: 0.5度
测试系统: 远方(EVERFINE)GO-2000A_V1系统 V2.0.272
环境湿度:70%
测试距离:8.425米 [K=1.0000]
备注:

墙面和天花板利用系数

实测参数: U:230.3V I:0.0615A P:5.979W PF:0.4225 实检光通:144.923x1 lm					
灯具名称: Linear 台灯			灯具类型:		灯具重量:
外型尺寸:			灯具规格:		测试编号:202000605A0002
制造厂商: TARGET			发光口面:0.22*0.1		保护角:

顶棚	80%			70%			50%			30%			10%			0
墙面	50%	30%	10%	50%	30%	10%	50%	30%	10%	50%	30%	10%	50%	30%	10%	0
地板	20%			20%			20%			20%			20%			0
室空间比	墙 壁 面 利 用 系 数															
0.0																
1.0	.327	.186	.059	.318	.182	.058	.302	.173	.055	.288	.166	.053	.274	.159	.051	
2.0	.305	.167	.051	.298	.164	.051	.284	.158	.049	.271	.152	.047	.258	.146	.046	
3.0	.282	.150	.045	.275	.147	.044	.262	.142	.043	.250	.137	.042	.239	.133	.041	
4.0	.259	.135	.040	.253	.132	.039	.242	.128	.038	.231	.124	.037	.221	.120	.037	
5.0	.239	.122	.035	.234	.120	.035	.223	.116	.034	.214	.113	.034	.205	.110	.033	
6.0	.221	.111	.032	.217	.109	.031	.207	.106	.031	.199	.103	.030	.191	.100	.030	
7.0	.206	.102	.029	.201	.100	.029	.193	.098	.028	.185	.095	.028	.178	.092	.027	
8.0	.192	.094	.026	.188	.093	.026	.180	.090	.026	.173	.088	.025	.167	.086	.025	
9.0	.180	.087	.024	.176	.086	.024	.169	.084	.024	.163	.082	.023	.157	.080	.023	
10.0	.169	.081	.022	.165	.080	.022	.159	.078	.022	.153	.076	.022	.148	.074	.021	

顶棚	80%			70%			50%			30%			10%			0
墙面	50%	30%	10%	50%	30%	10%	50%	30%	10%	50%	30%	10%	50%	30%	10%	0
地板	20%			20%			20%			20%			20%			0
室空间比	天 花 板 利 用 系 数															
0.0	.225	.225	.225	.193	.193	.193	.131	.131	.131	.076	.076	.076	.024	.024	.024	
1.0	.217	.191	.168	.185	.164	.145	.127	.113	.100	.073	.065	.058	.023	.021	.019	
2.0	.209	.167	.132	.179	.144	.114	.123	.100	.079	.071	.058	.047	.023	.019	.015	
3.0	.202	.150	.108	.173	.129	.094	.119	.090	.066	.069	.052	.039	.022	.017	.013	
4.0	.195	.137	.093	.167	.118	.080	.115	.082	.057	.067	.048	.033	.021	.016	.011	
5.0	.188	.127	.082	.161	.110	.071	.111	.077	.050	.064	.045	.030	.021	.015	.010	
6.0	.181	.119	.074	.155	.103	.064	.107	.072	.046	.062	.042	.027	.020	.014	.009	
7.0	.174	.112	.068	.150	.097	.060	.103	.068	.042	.060	.040	.025	.019	.013	.008	
8.0	.168	.106	.064	.144	.092	.056	.100	.065	.040	.058	.038	.024	.019	.013	.008	
9.0	.162	.101	.061	.139	.088	.053	.096	.062	.038	.056	.037	.022	.018	.012	.007	
10.0	.156	.097	.058	.134	.084	.051	.093	.059	.036	.054	.035	.021	.018	.012	.007	

C角度范围: 0度 - 360度
C角度间隔: 5.0度
测试速度: 快速
环境温度:25℃
测试人员:yechihong
测试日期:2020-06-05

γ角度范围: 0度 - 180度
γ角度间隔: 0.5度
测试系统: 远方 (EVERFINE) GO-2000A_V1系统 V2.0.272
环境湿度:70%
测试距离:8.425米 [K=1.0000]
备注:

UGR(Unified Glare Rating)数据表

实测参数: U:230.3V I:0.0615A P:5.979W PF:0.4225 实检光通:144.923x1 lm										
灯具名称: Linear 台灯					灯具类型:			灯具重量:		
外型尺寸:					灯具规格:			测试编号:202000605A0002		
制造厂商: TARGET					发光口面:0.22*0.1			保护角:		
反射比: 天花板	0.7	0.7	0.5	0.5	0.3	0.7	0.7	0.5	0.5	0.3
墙面	0.5	0.3	0.5	0.3	0.3	0.5	0.3	0.5	0.3	0.3
工作面	0.2	0.2	0.2	0.2	0.2	0.2	0.2	0.2	0.2	0.2
房间尺寸	交叉(Viewed crosswise)					向前(Viewed endwise)				
x = 2H y = 2H	23.3	24.9	23.7	25.2	25.5	23.6	25.1	23.9	25.4	25.7
3H	24.9	26.4	25.3	26.7	27.0	25.1	26.5	25.5	26.8	27.2
4H	25.6	27.0	26.0	27.3	27.7	25.8	27.1	26.1	27.4	27.8
6H	26.2	27.4	26.6	27.8	28.2	26.2	27.5	26.6	27.8	28.2
8H	26.4	27.6	26.8	27.9	28.3	26.4	27.6	26.8	28.0	28.3
12H	26.5	27.7	26.9	28.0	28.4	26.5	27.6	26.9	28.0	28.4
4H 2H	24.0	25.3	24.4	25.7	26.0	24.1	25.5	24.5	25.8	26.2
3H	25.8	26.9	26.2	27.3	27.7	25.9	27.1	26.3	27.4	27.8
4H	26.6	27.6	27.0	28.0	28.5	26.7	27.7	27.1	28.1	28.6
6H	27.2	28.2	27.7	28.6	29.1	27.3	28.2	27.7	28.6	29.1
8H	27.5	28.4	28.0	28.8	29.3	27.5	28.4	28.0	28.8	29.3
12H	27.7	28.5	28.2	28.9	29.5	27.6	28.4	28.1	28.9	29.4
8H 4H	26.9	27.7	27.3	28.2	28.7	26.9	27.8	27.4	28.3	28.8
6H	27.7	28.4	28.2	28.9	29.4	27.7	28.4	28.2	28.9	29.4
8H	28.0	28.7	28.6	29.2	29.7	28.0	28.6	28.5	29.2	29.7
12H	28.3	28.9	28.8	29.4	30.0	28.2	28.8	28.8	29.3	29.9
12H 4H	26.9	27.7	27.4	28.1	28.7	27.0	27.8	27.5	28.2	28.7
6H	27.7	28.4	28.3	28.9	29.5	27.8	28.4	28.3	28.9	29.5
8H	28.1	28.7	28.7	29.2	29.8	28.1	28.7	28.7	29.2	29.8
不同间隔布灯时,观察者位置引起的UGR变化:										
S = 1.0H	+ 0.1 / - 0.2					+ 0.1 / - 0.2				
1.5H	+ 0.2 / - 0.3					+ 0.2 / - 0.3				
2.0H	+ 0.1 / - 0.3					+ 0.2 / - 0.3				

依据CIE Pub.117计算,表格已按144.9lm光源光通进行修正($81\log(F/F_0) = -6.7$)。

C角度范围: 0度 - 360度
C角度间隔: 5.0度
测试速度: 快速
环境温度:25℃
测试人员:yechihong
测试日期:2020-06-05

γ角度范围: 0度 - 180度
γ角度间隔: 0.5度
测试系统: 远方(EVERFINE)GO-2000A_V1系统 V2.0.272
环境湿度:70%
测试距离:8.425米 [K=1.0000]
备注:

UF利用系数表

实测参数: U:230.3V I:0.0615A P:5.979W PF:0.4225 实检光通:144.923x1 lm		
灯具名称: Linear 台灯	灯具类型:	灯具重量:
外型尺寸:	灯具规格:	测试编号:202000605A0002
制造厂商: TARGET	发光口面:0.22*0.1	保护角:

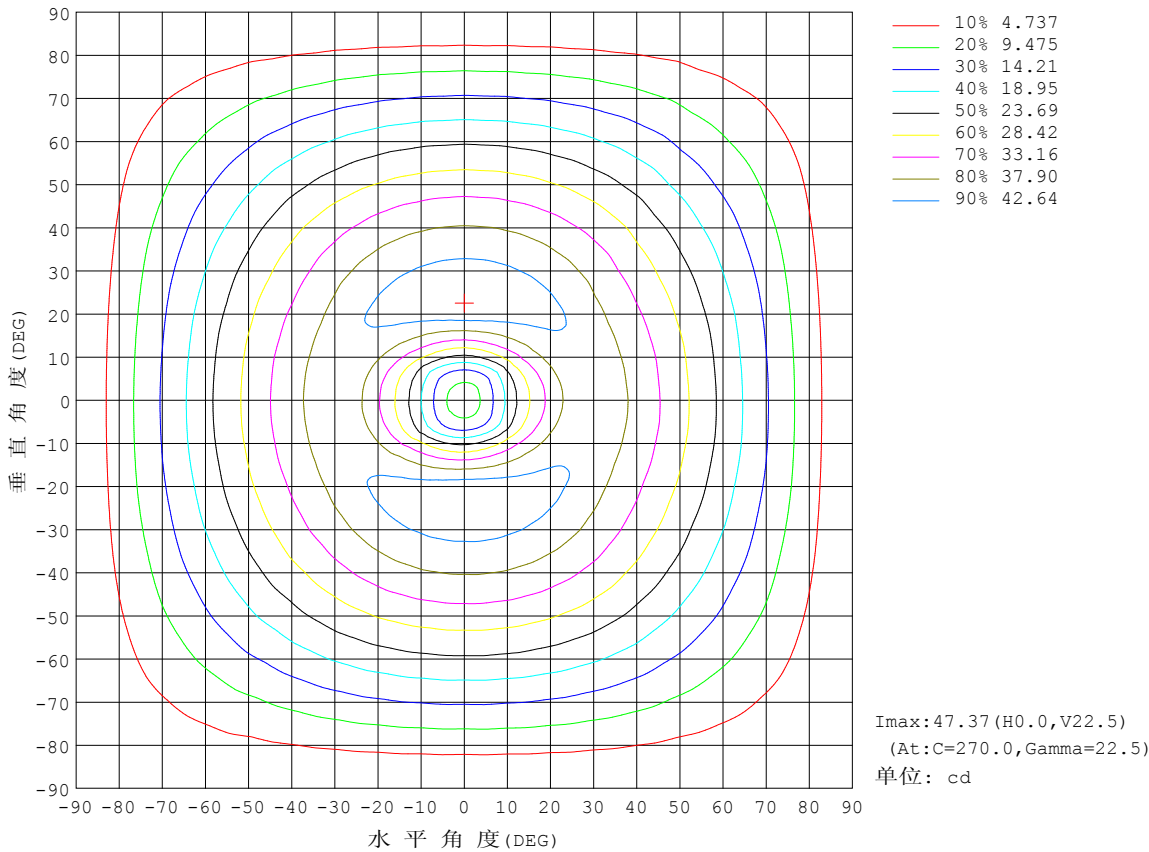
反 射 比 / REFLECTANCE										
天花板	0.8	0.8	0.8	0.7	0.7	0.7	0.5	0.5	0.5	0
墙壁	0.7	0.5	0.3	0.7	0.5	0.3	0.7	0.5	0.3	0
工作面	0.2	0.2	0.2	0.2	0.2	0.2	0.2	0.2	0.2	0
室形指数	利用系数 UTILIZATION FACTORS(%) $k(RI) \times RCR = 5$									
$k = 0.60$	54	42	34	53	41	34	51	41	34	27
0.80	64	52	44	62	51	44	60	50	43	36
1.00	72	61	53	71	60	53	68	61	52	44
1.25	80	68	61	78	68	60	75	66	59	51
1.50	85	74	67	83	73	66	79	71	65	56
2.00	92	83	76	90	81	75	86	79	73	64
2.50	96	88	81	94	86	80	89	83	78	68
3.00	100	92	86	97	91	85	92	87	82	72
4.00	104	98	93	101	96	91	96	92	88	77
5.00	107	101	97	104	99	95	98	95	91	81
ROOM INDEX	UF (总)									UF (直接)
依据标准文件 DIN EN 13032-2 2004			悬挂灯				安装距高比 SHRNOM = 1.25			

C角度范围: 0度 - 360度
 C角度间隔: 5.0度
 测试速度: 快速
 环境温度: 25℃
 测试人员: yechihong
 测试日期: 2020-06-05

γ角度范围: 0度 - 180度
 γ角度间隔: 0.5度
 测试系统: 远方 (EVERFINE) GO-2000A_V1系统 V2.0.272
 环境湿度: 70%
 测试距离: 8.425米 [K=1.0000]
 备注:

灯 具 等 光 强 曲 线

实测参数: U:230.3V I:0.0615A P:5.979W PF:0.4225 实检光通:144.923x1 lm		
灯具名称: Linear 台灯	灯具类型:	灯具重量:
外型尺寸:	灯具规格:	测试编号:202000605A0002
制造厂商: TARGET	发光口面:0.22*0.1	保护角:

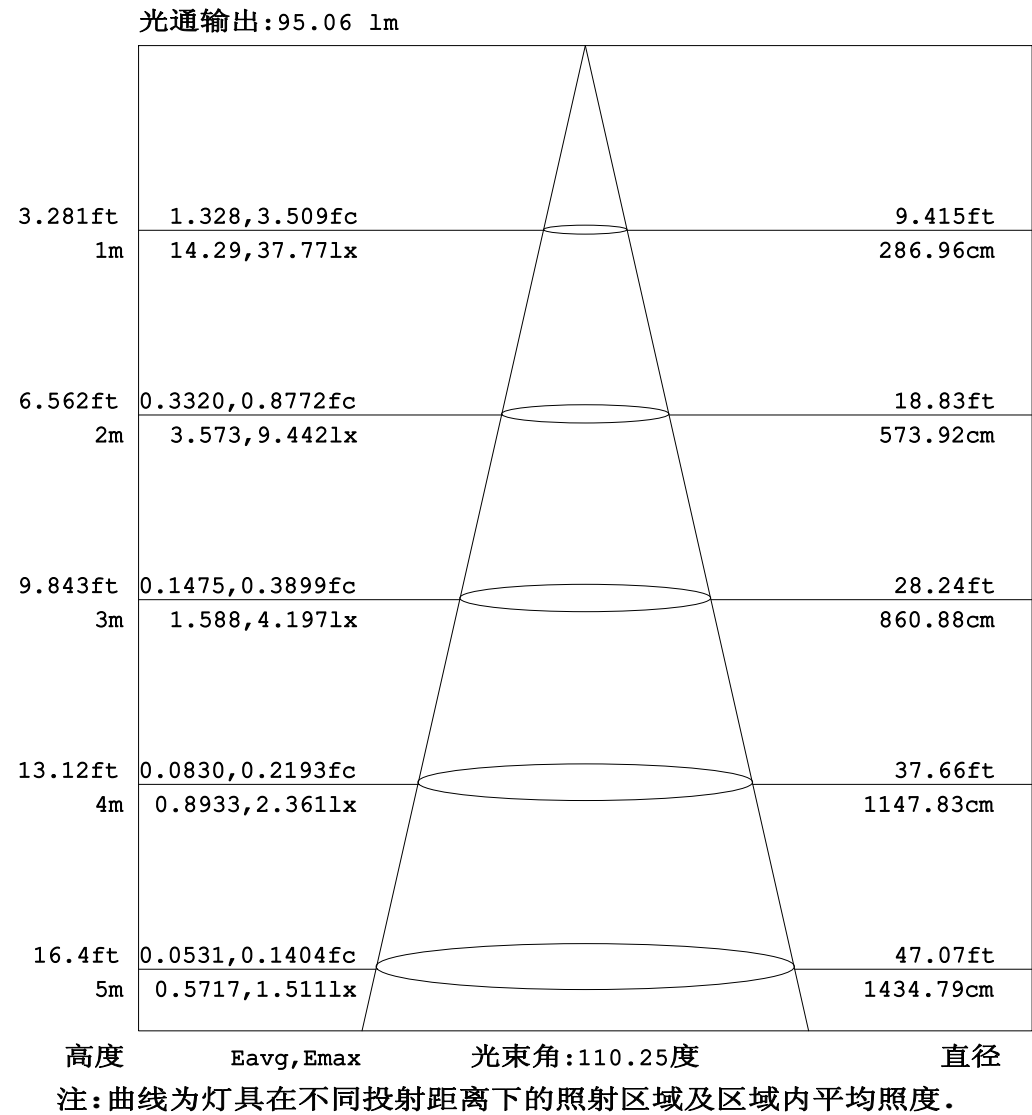


C角度范围: 0度 - 360度
C角度间隔: 5.0度
测试速度: 快速
环境温度: 25℃
测试人员: yechihong
测试日期: 2020-06-05

γ角度范围: 0度 - 180度
γ角度间隔: 0.5度
测试系统: 远方 (EVERFINE) GO-2000A_V1系统 V2.0.272
环境湿度: 70%
测试距离: 8.425米 [K=1.0000]
备注:

灯 具 有 效 平 均 照 度 图

实测参数: U:230.3V I:0.0615A P:5.979W PF:0.4225 实检光通:144.923x1 lm		
灯具名称: Linear 台灯	灯具类型:	灯具重量:
外型尺寸:	灯具规格:	测试编号:202000605A0002
制造厂商: TARGET	发光口面:0.22*0.1	保护角:

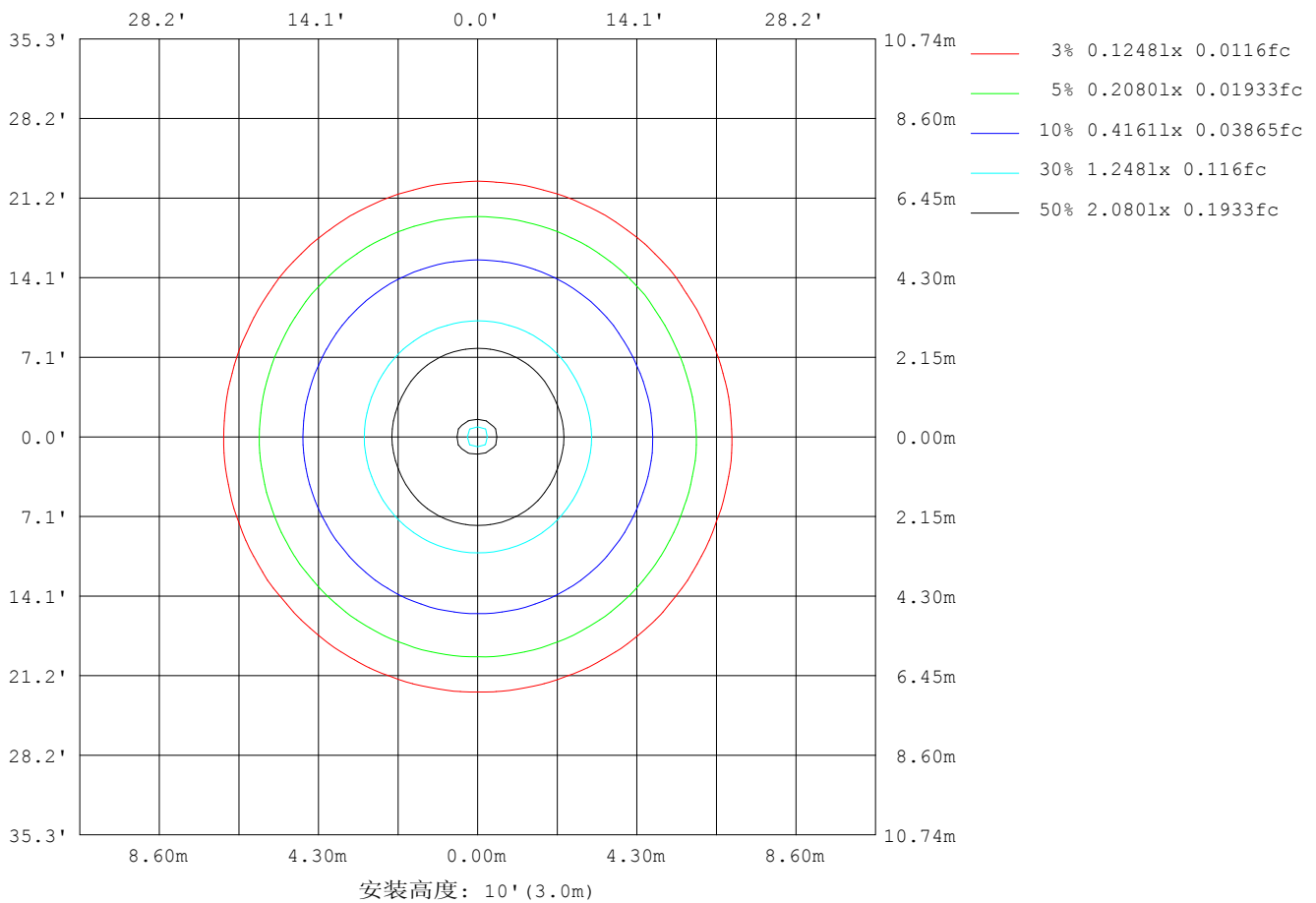


C角度范围: 0度 - 360度
C角度间隔: 5.0度
测试速度: 快速
环境温度:25℃
测试人员:yechihong
测试日期:2020-06-05

γ角度范围: 0度 - 180度
γ角度间隔: 0.5度
测试系统: 远方 (EVERFINE) GO-2000A_V1系统 V2.0.272
环境湿度:70%
测试距离:8.425米 [K=1.0000]
备注:

平面等照度曲线

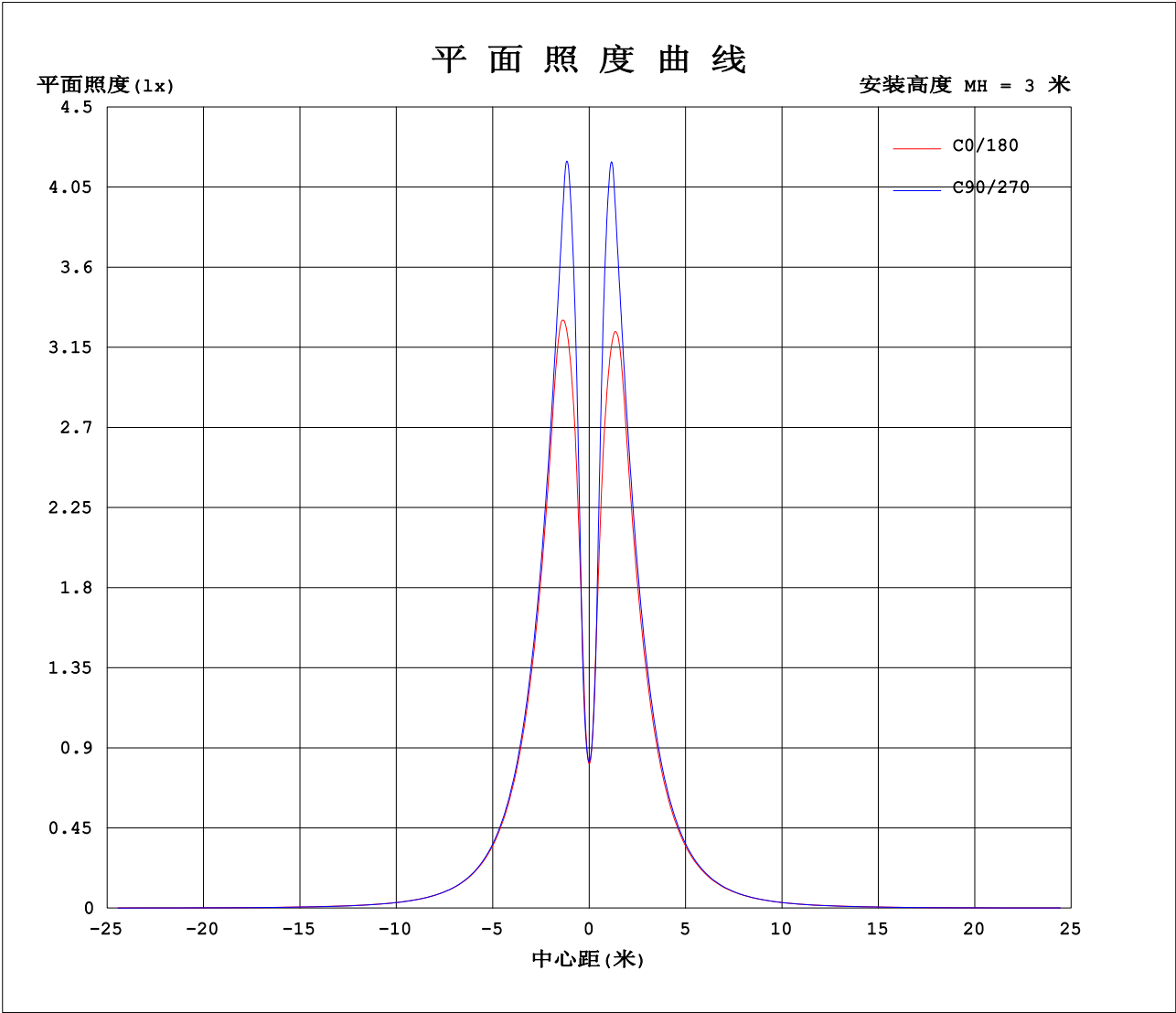
实测参数: U:230.3V I:0.0615A P:5.979W PF:0.4225 实检光通:144.923x1 lm		
灯具名称: Linear 台灯	灯具类型:	灯具重量:
外型尺寸:	灯具规格:	测试编号:202000605A0002
制造厂商: TARGET	发光口面:0.22*0.1	保护角:



C角度范围: 0度 - 360度
C角度间隔: 5.0度
测试速度: 快速
环境温度: 25℃
测试人员: yechihong
测试日期: 2020-06-05

γ角度范围: 0度 - 180度
γ角度间隔: 0.5度
测试系统: 远方 (EVERFINE) GO-2000A_V1系统 V2.0.272
环境湿度: 70%
测试距离: 8.425米 [K=1.0000]
备注:

平面照度曲线



C角度范围: 0度 - 360度
C角度间隔: 5.0度
测试速度: 快速
环境温度: 25℃
测试人员: yechihong
测试日期: 2020-06-05

γ角度范围: 0度 - 180度
γ角度间隔: 0.5度
测试系统: 远方 (EVERFINE) GO-2000A_V1系统 V2.0.272
环境湿度: 70%
测试距离: 8.425米 [K=1.0000]
备注:

光 强 分 布 数 据 表 格

实测参数: U:230.3V I:0.0615A P:5.979W PF:0.4225 实检光通:144.923x1 lm																	
灯具名称: Linear 台灯									灯具类型:						灯具重量:		
外型尺寸:									灯具规格:						测试编号:202000605A0002		
制造厂商: TARGET									发光口面:0.22*0.1						保护角:		

表--1		单位: cd																		
C(DEG) γ (DEG)	0	5	10	15	20	25	30	35	40	45	50	55	60	65	70	75	80	85	90	
0	7.30	7.30	7.31	7.32	7.32	7.33	7.34	7.36	7.37	7.37	7.40	7.39	7.41	7.42	7.42	7.42	7.42	7.43	7.42	
5	11.4	11.2	11.3	11.1	11.1	10.8	10.8	10.7	10.7	10.5	10.6	10.5	10.6	10.5	10.6	10.5	10.6	10.5	10.6	
10	20.0	19.8	19.9	19.7	19.8	19.5	19.3	19.2	19.7	19.9	20.7	21.1	21.8	22.1	22.5	22.6	22.9	22.8	22.9	
15	28.2	28.1	28.3	28.4	28.8	29.0	29.8	30.6	31.6	32.2	33.0	33.6	34.2	34.6	35.1	35.4	35.7	35.7	35.9	
20	34.6	34.8	35.1	35.5	36.3	37.0	37.7	38.5	39.3	39.9	40.6	41.3	42.2	42.9	43.7	44.3	45.0	45.2	45.3	
25	39.9	40.0	40.3	40.6	41.0	41.4	41.8	42.4	43.0	43.6	44.3	45.1	45.8	46.3	46.4	46.5	46.5	46.6	46.5	
30	41.9	41.8	41.8	41.7	41.7	41.9	42.2	42.7	42.9	43.3	43.5	43.7	43.9	44.0	44.0	44.2	44.1	44.2	44.1	
35	39.6	39.6	39.4	39.4	39.3	39.5	39.7	40.0	40.2	40.6	40.8	41.0	41.1	41.2	41.3	41.4	41.4	41.4	41.3	
40	36.7	36.7	36.5	36.5	36.4	36.5	36.7	37.0	37.2	37.6	37.7	37.9	38.0	38.1	38.1	38.2	38.2	38.3	38.1	
45	33.4	33.5	33.3	33.3	33.1	33.3	33.4	33.7	33.9	34.2	34.3	34.5	34.6	34.7	34.7	34.8	34.7	34.8	34.7	
50	30.0	30.0	29.8	29.8	29.7	29.8	29.9	30.2	30.3	30.7	30.7	30.9	30.9	31.1	31.0	31.1	31.0	31.1	31.0	
55	26.3	26.4	26.2	26.2	26.1	26.2	26.2	26.5	26.5	26.8	26.9	27.1	27.0	27.2	27.1	27.2	27.1	27.2	27.1	
60	22.5	22.6	22.4	22.4	22.2	22.4	22.4	22.6	22.6	22.9	22.9	23.1	23.0	23.1	23.1	23.2	23.1	23.1	23.0	
65	18.6	18.7	18.5	18.5	18.3	18.5	18.4	18.6	18.6	18.9	18.8	19.0	18.9	19.0	18.9	19.0	18.9	19.0	18.9	
70	14.6	14.7	14.5	14.6	14.4	14.5	14.5	14.6	14.5	14.8	14.7	14.8	14.7	14.8	14.7	14.8	14.7	14.8	14.7	
75	10.7	10.8	10.6	10.6	10.5	10.6	10.5	10.6	10.5	10.7	10.6	10.7	10.6	10.6	10.5	10.6	10.5	10.6	10.5	
80	6.87	6.94	6.79	6.79	6.62	6.68	6.58	6.63	6.51	6.65	6.56	6.63	6.51	6.59	6.47	6.53	6.42	6.50	6.39	
85	3.23	3.27	3.12	3.11	2.95	2.98	2.88	2.91	2.78	2.91	2.82	2.86	2.76	2.80	2.70	2.76	2.66	2.73	2.63	
90	0.79	0.76	0.78	0.75	0.77	0.75	0.77	0.75	0.76	0.74	0.74	0.72	0.73	0.72	0.72	0.72	0.73	0.72	0.72	
95	0.76	0.75	0.75	0.75	0.75	0.75	0.75	0.76	0.75	0.75	0.73	0.73	0.72	0.74	0.72	0.74	0.72	0.74	0.72	
100	0.75	0.77	0.75	0.78	0.75	0.78	0.76	0.79	0.75	0.79	0.75	0.77	0.73	0.79	0.74	0.78	0.75	0.78	0.74	
105	0.77	0.82	0.77	0.82	0.78	0.84	0.79	0.85	0.81	0.85	0.81	0.85	0.80	0.85	0.80	0.85	0.81	0.85	0.81	
110	0.84	0.90	0.85	0.90	0.85	0.90	0.86	0.91	0.89	0.93	0.90	0.92	0.88	0.93	0.88	0.93	0.89	0.93	0.89	
115	0.92	0.97	0.93	0.98	0.93	0.99	0.95	0.99	0.97	1.01	0.97	1.01	0.97	1.01	0.97	1.02	0.96	1.02	0.97	
120	1.02	1.06	1.03	1.07	1.04	1.08	1.04	1.09	1.05	1.10	1.05	1.10	1.05	1.10	1.05	1.10	1.05	1.10	1.05	
125	1.10	1.16	1.11	1.16	1.10	1.16	1.12	1.17	1.14	1.19	1.14	1.18	1.13	1.19	1.13	1.19	1.14	1.20	1.14	
130	1.20	1.25	1.20	1.25	1.20	1.25	1.21	1.26	1.22	1.27	1.23	1.27	1.22	1.28	1.22	1.28	1.22	1.28	1.23	
135	1.29	1.34	1.29	1.34	1.29	1.34	1.30	1.35	1.31	1.36	1.31	1.35	1.30	1.36	1.31	1.36	1.32	1.37	1.32	
140	1.38	1.43	1.38	1.43	1.38	1.43	1.39	1.44	1.39	1.44	1.40	1.44	1.39	1.44	1.39	1.44	1.39	1.44	1.40	
145	1.47	1.48	1.48	1.48	1.47	1.50	1.47	1.51	1.47	1.51	1.48	1.51	1.47	1.52	1.48	1.52	1.47	1.52	1.47	
150	1.48	1.47	1.48	1.48	1.49	1.49	1.50	1.51	1.52	1.54	1.54	1.56	1.53	1.56	1.53	1.57	1.54	1.57	1.54	
155	1.43	1.38	1.43	1.39	1.45	1.41	1.48	1.44	1.51	1.47	1.55	1.51	1.56	1.55	1.56	1.56	1.57	1.57	1.57	
160	1.27	1.23	1.27	1.22	1.28	1.24	1.31	1.28	1.35	1.33	1.39	1.37	1.44	1.41	1.46	1.43	1.49	1.45	1.50	
165	1.03	0.98	1.04	0.99	1.05	1.02	1.09	1.06	1.14	1.11	1.18	1.17	1.23	1.19	1.25	1.22	1.28	1.24	1.29	
170	0.77	0.72	0.77	0.72	0.77	0.74	0.81	0.78	0.86	0.84	0.92	0.90	0.97	0.93	1.00	0.97	1.02	0.98	1.03	
175	0.50	0.46	0.51	0.47	0.53	0.51	0.58	0.55	0.61	0.58	0.65	0.61	0.67	0.64	0.69	0.66	0.71	0.67	0.72	
180	0.37	0.37	0.37	0.37	0.37	0.37	0.38	0.38	0.38	0.37	0.38	0.38	0.38	0.38	0.38	0.38	0.38	0.38	0.38	

C角度范围: 0度 - 360度
C角度间隔: 5.0度
测试速度: 快速
环境温度:25℃
测试人员:yechihong
测试日期:2020-06-05

γ角度范围: 0度 - 180度
γ角度间隔: 0.5度
测试系统: 远方(EVERFINE)GO-2000A_V1系统 V2.0.272
环境湿度:70%
测试距离:8.425米 [K=1.0000]
备注:

光 强 分 布 数 据 表 格

实测参数: U:230.3V I:0.0615A P:5.979W PF:0.4225 实检光通:144.923x1 lm																		
灯具名称: Linear 台灯									灯具类型:					灯具重量:				
外型尺寸:									灯具规格:					测试编号:202000605A0002				
制造厂商: TARGET									发光口面:0.22*0.1					保护角:				

表--2

单位: cd

C(DEG) γ (DEG)	95	100	105	110	115	120	125	130	135	140	145	150	155	160	165	170	175	180	185
0	7.41	7.40	7.39	7.38	7.37	7.35	7.33	7.32	7.30	7.29	7.28	7.29	7.28	7.29	7.28	7.29	7.29	7.30	7.30
5	10.4	10.5	10.4	10.5	10.4	10.4	10.4	10.4	10.4	10.6	10.3	10.4	10.4	10.7	10.6	10.9	10.8	10.8	10.9
10	22.6	22.5	22.1	21.9	21.3	20.9	20.1	19.7	18.8	18.7	18.2	18.5	18.5	18.8	18.7	19.0	18.8	19.0	19.1
15	35.6	35.4	34.9	34.5	33.8	33.4	32.5	31.9	30.8	30.0	28.5	27.8	27.2	27.2	26.9	27.0	26.9	27.0	27.1
20	45.0	44.6	43.9	43.2	42.3	41.5	40.6	39.9	39.0	38.2	36.9	36.1	35.2	34.6	34.0	33.8	33.5	33.7	33.7
25	46.5	46.4	46.4	46.2	45.9	45.3	44.6	43.8	43.0	42.3	41.5	41.0	40.4	40.1	39.6	39.3	39.1	39.1	39.2
30	44.1	44.0	44.0	43.8	43.8	43.6	43.4	43.1	42.9	42.5	42.2	41.7	41.5	41.3	41.3	41.3	41.2	41.3	41.4
35	41.3	41.2	41.2	41.1	41.0	40.8	40.7	40.4	40.2	39.8	39.6	39.3	39.1	39.0	39.1	39.1	39.1	39.2	39.1
40	38.2	38.1	38.1	37.9	37.9	37.7	37.6	37.3	37.2	36.8	36.7	36.4	36.3	36.2	36.2	36.2	36.2	36.3	36.2
45	34.8	34.6	34.6	34.5	34.5	34.3	34.2	34.0	33.9	33.6	33.5	33.2	33.1	33.0	33.1	33.0	33.1	33.1	33.1
50	31.1	30.9	31.0	30.8	30.9	30.7	30.6	30.4	30.3	30.0	30.0	29.8	29.7	29.6	29.7	29.6	29.7	29.7	29.6
55	27.2	27.0	27.1	27.0	27.0	26.8	26.8	26.6	26.6	26.3	26.4	26.1	26.1	26.0	26.1	26.0	26.1	26.1	26.0
60	23.1	23.0	23.1	22.9	23.0	22.8	22.9	22.7	22.6	22.4	22.5	22.4	22.4	22.3	22.3	22.3	22.4	22.4	22.3
65	18.9	18.8	18.9	18.8	18.9	18.7	18.8	18.6	18.7	18.4	18.6	18.5	18.5	18.4	18.5	18.4	18.6	18.5	18.5
70	14.7	14.6	14.7	14.6	14.7	14.6	14.6	14.5	14.6	14.4	14.6	14.5	14.6	14.5	14.6	14.6	14.7	14.6	14.6
75	10.6	10.5	10.5	10.4	10.6	10.4	10.5	10.4	10.5	10.4	10.7	10.6	10.7	10.6	10.8	10.7	10.8	10.7	10.7
80	6.47	6.37	6.49	6.39	6.49	6.40	6.50	6.41	6.53	6.45	6.73	6.67	6.82	6.78	6.94	6.89	6.98	6.94	6.87
85	2.70	2.63	2.72	2.64	2.73	2.68	2.76	2.70	2.80	2.75	3.02	3.00	3.14	3.12	3.27	3.26	3.37	3.32	3.26
90	0.72	0.72	0.72	0.73	0.72	0.73	0.71	0.72	0.73	0.75	0.74	0.76	0.73	0.76	0.74	0.77	0.73	0.71	0.72
95	0.73	0.72	0.74	0.72	0.74	0.72	0.73	0.72	0.74	0.74	0.74	0.74	0.74	0.74	0.74	0.74	0.73	0.71	0.71
100	0.78	0.75	0.78	0.75	0.78	0.73	0.77	0.73	0.78	0.75	0.77	0.74	0.77	0.74	0.76	0.74	0.76	0.74	0.71
105	0.85	0.81	0.84	0.81	0.84	0.79	0.83	0.79	0.85	0.80	0.83	0.77	0.82	0.76	0.82	0.77	0.81	0.80	0.74
110	0.93	0.90	0.93	0.89	0.93	0.88	0.92	0.89	0.93	0.88	0.91	0.85	0.90	0.85	0.89	0.83	0.89	0.87	0.82
115	1.01	0.96	1.02	0.96	1.01	0.96	1.00	0.97	1.01	0.97	0.99	0.93	0.98	0.92	0.97	0.91	0.97	0.95	0.90
120	1.10	1.05	1.10	1.04	1.10	1.04	1.09	1.05	1.10	1.04	1.08	1.03	1.07	1.03	1.06	1.01	1.05	1.04	0.99
125	1.19	1.14	1.19	1.13	1.19	1.13	1.18	1.14	1.19	1.13	1.16	1.12	1.16	1.10	1.15	1.11	1.15	1.13	1.08
130	1.28	1.23	1.28	1.21	1.27	1.23	1.27	1.22	1.27	1.22	1.25	1.20	1.25	1.19	1.25	1.19	1.24	1.22	1.18
135	1.36	1.33	1.36	1.31	1.36	1.32	1.35	1.31	1.35	1.31	1.34	1.29	1.34	1.29	1.34	1.29	1.34	1.31	1.26
140	1.45	1.39	1.44	1.39	1.44	1.39	1.44	1.39	1.44	1.40	1.43	1.38	1.43	1.38	1.42	1.37	1.42	1.40	1.35
145	1.52	1.47	1.53	1.47	1.52	1.48	1.51	1.47	1.52	1.48	1.51	1.47	1.49	1.47	1.48	1.46	1.48	1.47	1.44
150	1.57	1.55	1.57	1.54	1.57	1.55	1.55	1.55	1.53	1.52	1.51	1.50	1.49	1.49	1.48	1.48	1.47	1.45	1.48
155	1.57	1.57	1.57	1.57	1.55	1.56	1.52	1.55	1.48	1.50	1.44	1.48	1.41	1.45	1.40	1.43	1.37	1.36	1.42
160	1.45	1.49	1.43	1.47	1.41	1.44	1.38	1.39	1.32	1.34	1.28	1.31	1.25	1.28	1.22	1.26	1.21	1.21	1.26
165	1.24	1.28	1.23	1.25	1.20	1.23	1.16	1.18	1.11	1.13	1.07	1.09	1.03	1.05	0.98	1.03	0.97	0.98	1.03
170	0.98	1.03	0.98	1.01	0.95	0.97	0.90	0.92	0.85	0.87	0.81	0.83	0.75	0.78	0.73	0.76	0.71	0.71	0.77
175	0.67	0.72	0.67	0.70	0.64	0.67	0.61	0.64	0.57	0.59	0.53	0.56	0.49	0.52	0.46	0.50	0.45	0.46	0.51
180	0.38	0.39	0.38	0.38	0.38	0.38	0.37	0.37	0.37	0.37	0.37	0.37	0.37	0.37	0.37	0.37	0.36	0.36	0.37

C角度范围: 0度 - 360度

C角度间隔: 5.0度

测试速度: 快速

环境温度:25℃

测试人员:yechihong

测试日期:2020-06-05

γ角度范围: 0度 - 180度

γ角度间隔: 0.5度

测试系统: 远方(EVERFINE)GO-2000A_V1系统 V2.0.272

环境湿度:70%

测试距离:8.425米 [K=1.0000]

备注:

光强分布数据表格

实测参数: U:230.3V I:0.0615A P:5.979W PF:0.4225 实检光通:144.923x1 lm																		
灯具名称: Linear 台灯									灯具类型:					灯具重量:				
外型尺寸:									灯具规格:					测试编号:202000605A0002				
制造厂商: TARGET									发光口面:0.22*0.1					保护角:				

表--3

单位: cd

C(DEG) γ (DEG)	190	195	200	205	210	215	220	225	230	235	240	245	250	255	260	265	270	275	280
0	7.31	7.32	7.32	7.33	7.34	7.36	7.37	7.37	7.40	7.39	7.41	7.42	7.42	7.42	7.42	7.43	7.42	7.41	7.40
5	10.8	10.8	10.6	10.7	10.5	10.5	10.4	10.5	10.5	10.5	10.5	10.5	10.5	10.6	10.5	10.6	10.4	10.5	10.4
10	18.9	19.0	18.7	18.8	18.6	18.5	18.3	19.0	19.6	20.4	20.8	21.5	21.7	22.2	22.2	22.5	22.4	22.6	22.4
15	27.0	27.2	27.2	27.7	28.1	29.0	29.8	31.0	31.8	32.7	33.2	33.9	34.3	34.9	35.1	35.5	35.4	35.6	35.3
20	33.8	34.3	34.7	35.6	36.4	37.4	38.1	39.1	39.9	40.8	41.5	42.5	43.2	44.0	44.5	45.0	45.1	45.1	44.7
25	39.4	39.8	40.1	40.7	41.2	41.8	42.4	43.2	43.9	44.7	45.5	46.0	46.3	46.4	46.5	46.6	46.6	46.6	46.6
30	41.3	41.4	41.4	41.6	41.8	42.2	42.7	42.9	43.2	43.4	43.7	43.8	43.9	44.0	44.1	44.1	44.2	44.2	44.2
35	39.1	39.1	39.1	39.1	39.4	39.6	40.0	40.2	40.5	40.7	40.9	41.0	41.1	41.1	41.3	41.3	41.4	41.4	41.4
40	36.2	36.2	36.2	36.2	36.4	36.6	37.0	37.2	37.5	37.6	37.8	37.9	38.0	38.0	38.2	38.1	38.2	38.2	38.2
45	33.1	33.0	33.1	33.0	33.2	33.4	33.8	33.9	34.1	34.2	34.4	34.5	34.6	34.6	34.7	34.7	34.8	34.7	34.8
50	29.7	29.6	29.7	29.6	29.8	29.9	30.2	30.3	30.5	30.6	30.8	30.8	30.9	30.9	31.0	31.0	31.1	31.0	31.1
55	26.1	26.0	26.1	26.0	26.2	26.3	26.5	26.5	26.7	26.8	27.0	26.9	27.1	27.0	27.2	27.1	27.2	27.1	27.2
60	22.4	22.2	22.3	22.2	22.4	22.4	22.7	22.6	22.8	22.8	22.9	22.9	23.0	23.0	23.1	23.0	23.2	23.1	23.2
65	18.5	18.4	18.5	18.4	18.5	18.5	18.7	18.6	18.8	18.7	18.8	18.8	18.9	18.9	19.0	18.9	19.0	18.9	19.0
70	14.6	14.5	14.6	14.4	14.5	14.5	14.6	14.5	14.6	14.6	14.7	14.6	14.7	14.7	14.8	14.7	14.8	14.7	14.8
75	10.7	10.6	10.7	10.5	10.6	10.5	10.6	10.5	10.5	10.5	10.6	10.5	10.6	10.5	10.6	10.5	10.6	10.5	10.6
80	6.94	6.79	6.83	6.66	6.68	6.57	6.66	6.48	6.55	6.45	6.54	6.44	6.52	6.43	6.53	6.44	6.55	6.47	6.57
85	3.28	3.14	3.15	2.99	2.99	2.88	2.94	2.78	2.81	2.72	2.78	2.69	2.75	2.67	2.75	2.68	2.77	2.70	2.79
90	0.71	0.72	0.70	0.72	0.70	0.71	0.70	0.68	0.67	0.67	0.67	0.69	0.67	0.68	0.67	0.67	0.66	0.67	0.67
95	0.71	0.70	0.71	0.70	0.72	0.70	0.72	0.68	0.70	0.67	0.69	0.68	0.71	0.67	0.70	0.67	0.70	0.67	0.70
100	0.73	0.70	0.75	0.70	0.75	0.71	0.77	0.71	0.76	0.70	0.75	0.71	0.76	0.70	0.76	0.71	0.75	0.70	0.76
105	0.80	0.75	0.80	0.75	0.81	0.77	0.83	0.78	0.82	0.77	0.82	0.77	0.83	0.77	0.82	0.77	0.83	0.78	0.82
110	0.86	0.81	0.87	0.83	0.89	0.84	0.90	0.86	0.90	0.85	0.90	0.85	0.91	0.85	0.90	0.86	0.91	0.86	0.91
115	0.96	0.91	0.96	0.91	0.97	0.93	0.99	0.95	0.99	0.94	0.98	0.94	0.99	0.94	0.99	0.95	0.99	0.95	0.99
120	1.04	0.99	1.04	1.00	1.05	1.01	1.07	1.05	1.07	1.03	1.07	1.04	1.07	1.03	1.08	1.04	1.08	1.04	1.08
125	1.13	1.08	1.13	1.09	1.15	1.11	1.16	1.11	1.16	1.11	1.16	1.11	1.16	1.11	1.16	1.11	1.16	1.11	1.16
130	1.22	1.19	1.23	1.18	1.24	1.19	1.25	1.19	1.25	1.19	1.25	1.19	1.25	1.20	1.25	1.20	1.24	1.19	1.25
135	1.31	1.27	1.31	1.27	1.32	1.27	1.34	1.29	1.34	1.29	1.33	1.29	1.34	1.28	1.34	1.29	1.34	1.29	1.33
140	1.41	1.35	1.40	1.35	1.42	1.37	1.42	1.37	1.42	1.37	1.42	1.37	1.42	1.36	1.42	1.37	1.42	1.36	1.42
145	1.47	1.44	1.48	1.44	1.50	1.45	1.50	1.46	1.50	1.46	1.50	1.46	1.50	1.46	1.50	1.46	1.49	1.46	1.50
150	1.47	1.48	1.48	1.48	1.49	1.50	1.51	1.53	1.55	1.53	1.55	1.53	1.56	1.52	1.57	1.52	1.58	1.53	1.57
155	1.38	1.44	1.39	1.46	1.43	1.49	1.47	1.53	1.50	1.55	1.54	1.56	1.56	1.57	1.57	1.57	1.58	1.57	1.56
160	1.22	1.28	1.24	1.30	1.27	1.34	1.32	1.39	1.37	1.44	1.41	1.48	1.44	1.49	1.46	1.51	1.47	1.51	1.46
165	1.00	1.05	1.03	1.09	1.06	1.14	1.12	1.19	1.18	1.23	1.20	1.27	1.23	1.29	1.25	1.31	1.26	1.30	1.25
170	0.74	0.79	0.75	0.82	0.80	0.88	0.87	0.93	0.91	0.97	0.95	1.02	0.98	1.04	1.00	1.05	1.00	1.05	1.00
175	0.46	0.52	0.49	0.56	0.53	0.60	0.58	0.64	0.62	0.68	0.65	0.71	0.67	0.73	0.68	0.73	0.69	0.73	0.68
180	0.37	0.37	0.37	0.37	0.37	0.38	0.38	0.38	0.38	0.38	0.38	0.38	0.38	0.38	0.38	0.38	0.38	0.38	0.38

C角度范围: 0度 - 360度

C角度间隔: 5.0度

测试速度: 快速

环境温度:25℃

测试人员:yechihong

测试日期:2020-06-05

γ角度范围: 0度 - 180度

γ角度间隔: 0.5度

测试系统: 远方(EVERFINE)GO-2000A_V1系统 V2.0.272

环境湿度:70%

测试距离:8.425米 [K=1.0000]

备注:

光 强 分 布 数 据 表 格

实测参数: U:230.3V I:0.0615A P:5.979W PF:0.4225 实检光通:144.923x1 lm																	
灯具名称: Linear 台灯									灯具类型:						灯具重量:		
外型尺寸:									灯具规格:						测试编号:202000605A0002		
制造厂商: TARGET									发光口面:0.22*0.1						保护角:		

表--4

单位: cd

C(DEG) γ (DEG)	285	290	295	300	305	310	315	320	325	330	335	340	345	350	355				
0	7.39	7.38	7.37	7.35	7.33	7.32	7.30	7.29	7.28	7.29	7.28	7.29	7.28	7.29	7.29				
5	10.5	10.4	10.4	10.3	10.4	10.3	10.4	10.4	10.8	10.8	11.0	11.0	11.2	11.2	11.4				
10	22.4	22.0	21.8	21.2	20.9	20.1	19.7	18.9	19.4	19.4	19.7	19.7	19.9	19.8	20.0				
15	35.2	34.7	34.4	33.8	33.3	32.5	31.9	30.8	30.5	29.6	29.1	28.5	28.5	28.2	28.2				
20	44.2	43.4	42.7	41.8	41.2	40.3	39.7	38.8	38.4	37.6	36.9	36.0	35.5	34.9	34.7				
25	46.5	46.4	46.2	45.6	44.9	44.1	43.4	42.7	42.2	41.6	41.3	40.8	40.5	40.1	39.9				
30	44.1	44.1	43.9	43.8	43.6	43.5	43.2	42.9	42.4	42.0	41.8	41.7	41.7	41.7	41.8				
35	41.3	41.3	41.2	41.1	40.9	40.8	40.4	40.2	39.7	39.5	39.3	39.3	39.3	39.4	39.5				
40	38.1	38.1	38.0	38.0	37.8	37.7	37.4	37.2	36.7	36.5	36.3	36.4	36.4	36.5	36.5				
45	34.7	34.7	34.6	34.6	34.4	34.3	34.1	33.9	33.4	33.3	33.1	33.2	33.2	33.3	33.3				
50	31.0	31.1	30.9	30.9	30.7	30.7	30.5	30.4	29.9	29.8	29.6	29.7	29.7	29.9	29.8				
55	27.1	27.2	27.0	27.1	26.9	26.9	26.7	26.7	26.2	26.1	26.0	26.1	26.0	26.2	26.2				
60	23.1	23.1	23.0	23.1	22.9	23.0	22.8	22.8	22.3	22.3	22.2	22.3	22.2	22.4	22.4				
65	18.9	19.0	18.9	19.0	18.9	18.9	18.7	18.8	18.4	18.4	18.3	18.4	18.3	18.5	18.5				
70	14.7	14.8	14.7	14.8	14.7	14.8	14.7	14.7	14.3	14.4	14.3	14.4	14.4	14.6	14.5				
75	10.5	10.7	10.6	10.7	10.6	10.7	10.6	10.7	10.4	10.4	10.4	10.5	10.5	10.7	10.6				
80	6.49	6.60	6.54	6.63	6.57	6.67	6.60	6.72	6.45	6.57	6.51	6.69	6.67	6.83	6.80				
85	2.73	2.82	2.77	2.88	2.82	2.93	2.87	2.98	2.77	2.88	2.85	3.01	3.02	3.18	3.17				
90	0.68	0.68	0.69	0.67	0.68	0.68	0.70	0.71	0.71	0.70	0.73	0.71	0.73	0.72	0.73				
95	0.67	0.70	0.68	0.70	0.67	0.70	0.69	0.71	0.71	0.72	0.71	0.72	0.72	0.72	0.72				
100	0.71	0.75	0.71	0.75	0.70	0.75	0.72	0.77	0.71	0.75	0.71	0.75	0.72	0.75	0.72				
105	0.77	0.82	0.77	0.82	0.76	0.82	0.77	0.82	0.77	0.81	0.76	0.81	0.76	0.81	0.75				
110	0.86	0.90	0.85	0.89	0.85	0.90	0.85	0.90	0.84	0.88	0.83	0.88	0.82	0.87	0.82				
115	0.95	0.98	0.94	0.98	0.92	0.99	0.93	0.98	0.92	0.96	0.92	0.96	0.90	0.96	0.90				
120	1.04	1.07	1.03	1.06	1.01	1.06	1.04	1.06	1.00	1.05	0.99	1.04	0.99	1.04	0.98				
125	1.10	1.16	1.11	1.15	1.11	1.15	1.10	1.15	1.09	1.13	1.10	1.13	1.09	1.13	1.07				
130	1.20	1.24	1.19	1.24	1.19	1.24	1.19	1.23	1.18	1.22	1.19	1.22	1.18	1.21	1.18				
135	1.28	1.33	1.27	1.32	1.26	1.32	1.27	1.32	1.26	1.31	1.26	1.31	1.26	1.31	1.25				
140	1.36	1.41	1.36	1.41	1.35	1.40	1.36	1.40	1.35	1.40	1.35	1.40	1.35	1.39	1.34				
145	1.45	1.49	1.45	1.49	1.43	1.49	1.43	1.48	1.43	1.48	1.43	1.48	1.43	1.48	1.43				
150	1.53	1.56	1.52	1.55	1.51	1.52	1.50	1.49	1.48	1.47	1.47	1.47	1.48	1.46	1.48				
155	1.56	1.56	1.55	1.53	1.54	1.48	1.50	1.45	1.47	1.40	1.44	1.39	1.43	1.37	1.41				
160	1.49	1.43	1.46	1.40	1.42	1.35	1.35	1.30	1.32	1.25	1.29	1.23	1.27	1.21	1.26				
165	1.28	1.22	1.25	1.19	1.21	1.14	1.14	1.10	1.10	1.04	1.05	1.00	1.04	0.99	1.03				
170	1.02	0.96	0.99	0.93	0.95	0.88	0.88	0.83	0.82	0.75	0.78	0.73	0.77	0.71	0.76				
175	0.71	0.66	0.70	0.64	0.67	0.60	0.62	0.57	0.58	0.52	0.55	0.48	0.52	0.45	0.49				
180	0.38	0.38	0.38	0.38	0.37	0.37	0.37	0.34	0.37	0.37	0.37	0.37	0.37	0.37	0.37				

C角度范围: 0度 - 360度

C角度间隔: 5.0度

测试速度: 快速

环境温度:25℃

测试人员:yechihong

测试日期:2020-06-05

γ角度范围: 0度 - 180度

γ角度间隔: 0.5度

测试系统: 远方(EVERFINE)GO-2000A_V1系统 V2.0.272

环境湿度:70%

测试距离:8.425米 [K=1.0000]

备注:

Photometric Data Table [cd]

G/C	0.0	5.0	10.0	15.0	20.0	25.0	30.0	35.0	40.0	45.0
0.0	7.302	7.298	7.311	7.317	7.316	7.330	7.338	7.357	7.365	7.374
2.5	8.347	8.270	8.342	8.262	8.349	8.219	8.258	8.192	8.247	8.125
5.0	11.41	11.21	11.30	11.07	11.11	10.85	10.81	10.70	10.75	10.53
7.5	15.66	15.48	15.55	15.29	15.33	14.84	14.72	14.42	14.57	14.36
10.0	19.99	19.82	19.95	19.71	19.79	19.47	19.33	19.18	19.73	19.93
12.5	24.29	24.16	24.35	24.20	24.36	24.25	24.45	24.98	26.02	26.44
15.0	28.15	28.13	28.32	28.36	28.76	29.01	29.76	30.59	31.63	32.20
17.5	31.53	31.54	31.82	32.06	32.74	33.31	34.23	35.01	36.02	36.53
20.0	34.65	34.75	35.11	35.54	36.32	36.95	37.74	38.49	39.29	39.89
22.5	37.48	37.62	38.01	38.49	39.11	39.64	40.28	40.88	41.62	42.19
25.0	39.92	39.98	40.29	40.55	40.98	41.39	41.82	42.39	42.97	43.61
27.5	41.52	41.52	41.58	41.70	41.82	42.12	42.40	43.01	43.52	44.16
30.0	41.88	41.83	41.78	41.73	41.74	41.89	42.22	42.65	42.93	43.31
32.5	40.98	40.96	40.80	40.76	40.63	40.82	41.00	41.37	41.63	42.01
35.0	39.60	39.61	39.43	39.41	39.29	39.47	39.65	39.98	40.24	40.61
37.5	38.18	38.17	38.03	37.98	37.88	38.04	38.21	38.53	38.75	39.13
40.0	36.66	36.68	36.52	36.49	36.38	36.52	36.69	37.00	37.20	37.56
42.5	35.08	35.10	34.94	34.91	34.80	34.94	35.08	35.39	35.56	35.94
45.0	33.43	33.47	33.29	33.27	33.14	33.31	33.43	33.71	33.88	34.23
47.5	31.72	31.76	31.60	31.58	31.46	31.61	31.70	31.99	32.11	32.46
50.0	29.97	29.99	29.83	29.82	29.70	29.85	29.93	30.18	30.30	30.66
52.5	28.17	28.21	28.04	28.04	27.92	28.06	28.11	28.37	28.47	28.79
55.0	26.30	26.35	26.19	26.19	26.05	26.19	26.25	26.47	26.54	26.85
57.5	24.41	24.49	24.31	24.31	24.16	24.30	24.33	24.56	24.60	24.88
60.0	22.49	22.56	22.38	22.40	22.25	22.39	22.40	22.59	22.64	22.90
62.5	20.54	20.64	20.44	20.45	20.29	20.43	20.42	20.61	20.63	20.89
65.0	18.59	18.68	18.49	18.51	18.35	18.45	18.45	18.61	18.62	18.86
67.5	16.61	16.69	16.51	16.53	16.36	16.49	16.44	16.60	16.56	16.81
70.0	14.63	14.73	14.54	14.57	14.40	14.51	14.46	14.59	14.53	14.76
72.5	12.66	12.74	12.58	12.60	12.43	12.53	12.46	12.57	12.51	12.70
75.0	10.71	10.78	10.63	10.65	10.49	10.56	10.50	10.58	10.51	10.67
77.5	8.782	8.844	8.685	8.699	8.546	8.606	8.521	8.586	8.583	8.643
80.0	6.874	6.944	6.787	6.793	6.624	6.676	6.577	6.632	6.512	6.654
82.5	5.026	5.084	4.941	4.932	4.759	4.800	4.700	4.742	4.616	4.733
85.0	3.233	3.274	3.123	3.107	2.948	2.981	2.875	2.906	2.785	2.907
87.5	1.530	1.560	1.437	1.431	1.312	1.345	1.289	1.303	1.240	1.320
90.0	0.7880	0.7559	0.7833	0.7514	0.7745	0.7469	0.7744	0.7515	0.7607	0.7378
92.5	0.7607	0.7515	0.7560	0.7469	0.7560	0.7469	0.7516	0.7515	0.7469	0.7379
95.0	0.7559	0.7515	0.7470	0.7469	0.7470	0.7515	0.7515	0.7561	0.7469	0.7471
97.5	0.7469	0.7605	0.7469	0.7561	0.7469	0.7605	0.7515	0.7741	0.7469	0.7651
100.0	0.7469	0.7741	0.7514	0.7785	0.7469	0.7787	0.7560	0.7878	0.7469	0.7878
102.5	0.7469	0.7967	0.7515	0.7925	0.7515	0.7970	0.7604	0.8195	0.7695	0.8195
105.0	0.7696	0.8197	0.7740	0.8239	0.7829	0.8375	0.7876	0.8511	0.8146	0.8513
107.5	0.8103	0.8601	0.8146	0.8603	0.8148	0.8737	0.8237	0.8784	0.8463	0.8875
110.0	0.8420	0.8964	0.8465	0.9011	0.8509	0.9010	0.8646	0.9146	0.8918	0.9326
112.5	0.8916	0.9326	0.8872	0.9374	0.8873	0.9462	0.9008	0.9507	0.9189	0.9688
115.0	0.9233	0.9735	0.9323	0.9782	0.9280	0.9914	0.9547	0.9918	0.9686	1.014
117.5	0.9686	1.023	0.9687	1.019	0.9732	1.028	0.9823	1.041	1.000	1.055
120.0	1.018	1.064	1.032	1.069	1.036	1.077	1.041	1.091	1.045	1.100
122.5	1.059	1.114	1.059	1.109	1.068	1.114	1.073	1.136	1.095	1.145
125.0	1.104	1.159	1.109	1.159	1.105	1.159	1.118	1.168	1.140	1.191
127.5	1.145	1.204	1.150	1.204	1.163	1.209	1.176	1.218	1.177	1.236
130.0	1.199	1.245	1.199	1.245	1.200	1.254	1.209	1.263	1.217	1.272
132.5	1.245	1.299	1.240	1.295	1.249	1.299	1.249	1.304	1.263	1.313
135.0	1.290	1.340	1.290	1.344	1.290	1.345	1.303	1.354	1.313	1.358
137.5	1.331	1.385	1.335	1.385	1.335	1.385	1.335	1.390	1.349	1.394
140.0	1.380	1.430	1.376	1.426	1.376	1.426	1.390	1.435	1.394	1.440
142.5	1.417	1.471	1.417	1.467	1.421	1.467	1.421	1.481	1.430	1.476
145.0	1.471	1.485	1.476	1.485	1.471	1.498	1.467	1.512	1.471	1.512
147.5	1.485	1.485	1.485	1.485	1.489	1.498	1.498	1.512	1.507	1.539
150.0	1.485	1.471	1.485	1.480	1.494	1.494	1.503	1.512	1.521	1.544
152.5	1.485	1.435	1.485	1.448	1.494	1.480	1.503	1.489	1.521	1.521
155.0	1.431	1.385	1.431	1.394	1.449	1.408	1.480	1.444	1.507	1.471
157.5	1.358	1.321	1.363	1.321	1.381	1.335	1.403	1.372	1.435	1.408
160.0	1.273	1.226	1.268	1.222	1.277	1.245	1.313	1.280	1.349	1.326
162.5	1.159	1.109	1.159	1.113	1.168	1.141	1.209	1.186	1.240	1.217
165.0	1.033	0.9820	1.037	0.9910	1.046	1.018	1.087	1.064	1.136	1.109
167.5	0.9012	0.8553	0.9060	0.8597	0.9149	0.8822	0.9464	0.9279	1.005	0.9861
170.0	0.7653	0.7194	0.7656	0.7238	0.7749	0.7419	0.8065	0.7831	0.8649	0.8412
172.5	0.6028	0.5652	0.6114	0.5747	0.6340	0.6019	0.6746	0.6562	0.7247	0.7057
175.0	0.4980	0.4616	0.5071	0.4661	0.5343	0.5068	0.5751	0.5474	0.6113	0.5833
177.5	0.4301	0.3847	0.4346	0.3939	0.4482	0.4119	0.4800	0.4570	0.5028	0.4659
180.0	0.3667	0.3667	0.3712	0.3712	0.3712	0.3712	0.3757	0.3757	0.3757	0.3712

C角度范围: 0度 - 360度
 C角度间隔: 5.0度
 测试速度: 快速
 环境温度: 25℃
 测试人员: yechihong
 测试日期: 2020-06-05

γ角度范围: 0度 - 180度
 γ角度间隔: 0.5度
 测试系统: 远方(EVERFINE)GO-2000A_V1系统 V2.0.272
 环境湿度: 70%
 测试距离: 8.425米 [K=1.0000]
 备注:

Photometric Data Table [cd]

G/C	50.0	55.0	60.0	65.0	70.0	75.0	80.0	85.0	90.0	95.0
0.0	7.397	7.393	7.407	7.424	7.425	7.425	7.424	7.429	7.416	7.406
2.5	8.170	8.101	8.160	8.108	8.165	8.102	8.159	8.101	8.162	8.094
5.0	10.58	10.47	10.56	10.47	10.56	10.46	10.56	10.46	10.56	10.43
7.5	14.56	14.60	15.00	15.07	15.46	15.43	15.69	15.54	15.68	15.41
10.0	20.68	21.11	21.83	22.09	22.54	22.62	22.91	22.77	22.88	22.59
12.5	27.32	27.81	28.61	28.86	29.40	29.45	29.80	29.67	29.83	29.48
15.0	33.00	33.58	34.23	34.64	35.14	35.38	35.74	35.75	35.89	35.60
17.5	37.36	37.92	38.68	39.16	39.86	40.29	40.80	40.94	41.06	40.77
20.0	40.63	41.34	42.18	42.93	43.75	44.34	44.96	45.16	45.29	44.97
22.5	42.99	43.76	44.70	45.44	46.23	46.77	47.14	47.31	47.28	47.19
25.0	44.34	45.12	45.82	46.27	46.43	46.52	46.55	46.59	46.54	46.53
27.5	44.68	44.98	45.11	45.24	45.30	45.38	45.39	45.47	45.39	45.38
30.0	43.52	43.75	43.86	44.02	44.05	44.15	44.14	44.23	44.13	44.14
32.5	42.19	42.43	42.52	42.70	42.71	42.81	42.81	42.87	42.77	42.78
35.0	40.77	41.01	41.08	41.25	41.26	41.36	41.36	41.40	41.31	41.33
37.5	39.27	39.50	39.54	39.75	39.72	39.84	39.81	39.87	39.75	39.81
40.0	37.69	37.91	37.96	38.12	38.11	38.24	38.19	38.26	38.15	38.19
42.5	36.05	36.27	36.29	36.43	36.43	36.52	36.47	36.56	36.45	36.50
45.0	34.32	34.53	34.55	34.69	34.67	34.78	34.72	34.80	34.70	34.75
47.5	32.54	32.77	32.77	32.92	32.88	32.98	32.90	32.98	32.91	32.94
50.0	30.71	30.91	30.90	31.06	30.99	31.11	31.01	31.12	31.01	31.06
52.5	28.83	29.02	29.13	29.13	29.07	29.19	29.10	29.19	29.08	29.14
55.0	26.89	27.06	27.01	27.15	27.10	27.20	27.13	27.18	27.09	27.16
57.5	24.91	25.07	25.02	25.14	25.10	25.18	25.10	25.16	25.07	25.14
60.0	22.93	23.07	23.02	23.12	23.06	23.17	23.07	23.14	23.05	23.11
62.5	20.89	21.03	20.96	21.07	20.99	21.08	20.99	21.06	20.95	21.04
65.0	18.83	18.97	18.88	19.00	18.91	18.99	18.90	18.97	18.85	18.94
67.5	16.77	16.89	16.79	16.89	16.81	16.89	16.78	16.87	16.75	16.84
70.0	14.71	14.81	14.71	14.81	14.71	14.79	14.68	14.77	14.65	14.74
72.5	12.64	12.74	12.63	12.71	12.61	12.70	12.57	12.66	12.54	12.64
75.0	10.60	10.68	10.57	10.65	10.54	10.62	10.51	10.58	10.47	10.55
77.5	8.556	8.633	8.518	8.595	8.481	8.558	8.443	8.520	8.407	8.493
80.0	6.559	6.632	6.509	6.586	6.470	6.533	6.423	6.496	6.389	6.472
82.5	4.639	4.696	4.578	4.651	4.528	4.595	4.482	4.555	4.450	4.538
85.0	2.824	2.864	2.755	2.801	2.702	2.757	2.660	2.727	2.630	2.703
87.5	1.289	1.309	1.236	1.252	1.194	1.211	1.159	1.194	1.143	1.180
90.0	0.7380	0.7152	0.7342	0.7243	0.7245	0.7198	0.7293	0.7198	0.7201	0.7152
92.5	0.7288	0.7152	0.7198	0.7288	0.7198	0.7242	0.7198	0.7243	0.7152	0.7243
95.0	0.7288	0.7335	0.7198	0.7424	0.7198	0.7378	0.7198	0.7379	0.7152	0.7334
97.5	0.7288	0.7469	0.7198	0.7605	0.7198	0.7517	0.7198	0.7517	0.7152	0.7516
100.0	0.7515	0.7741	0.7331	0.7877	0.7424	0.7789	0.7467	0.7831	0.7423	0.7787
102.5	0.7650	0.8058	0.7559	0.8194	0.7604	0.8060	0.7602	0.8149	0.7602	0.8059
105.0	0.8056	0.8465	0.8011	0.8511	0.7968	0.8511	0.8102	0.8513	0.8098	0.8510
107.5	0.8420	0.8786	0.8325	0.8874	0.8329	0.8919	0.8374	0.8963	0.8374	0.8918
110.0	0.9006	0.9192	0.8826	0.9326	0.8826	0.9284	0.8917	0.9328	0.8873	0.9327
112.5	0.9234	0.9643	0.9189	0.9734	0.9144	0.9735	0.9231	0.9736	0.9188	0.9692
115.0	0.9687	1.010	0.9687	1.014	0.9687	1.019	0.9642	1.019	0.9686	1.014
117.5	1.014	1.055	1.005	1.059	1.005	1.059	1.014	1.064	1.014	1.060
120.0	1.054	1.096	1.045	1.096	1.050	1.105	1.054	1.105	1.055	1.105
122.5	1.100	1.132	1.095	1.141	1.100	1.145	1.100	1.154	1.095	1.146
125.0	1.136	1.182	1.132	1.186	1.131	1.186	1.136	1.195	1.141	1.191
127.5	1.182	1.222	1.181	1.236	1.186	1.227	1.186	1.236	1.186	1.236
130.0	1.226	1.268	1.222	1.277	1.222	1.277	1.222	1.281	1.231	1.281
132.5	1.268	1.308	1.258	1.317	1.263	1.313	1.267	1.322	1.268	1.322
135.0	1.313	1.349	1.303	1.358	1.313	1.358	1.317	1.367	1.322	1.363
137.5	1.349	1.394	1.344	1.403	1.344	1.399	1.353	1.404	1.353	1.399
140.0	1.399	1.435	1.390	1.444	1.394	1.435	1.394	1.444	1.399	1.448
142.5	1.426	1.476	1.421	1.480	1.426	1.472	1.426	1.480	1.430	1.480
145.0	1.476	1.512	1.471	1.521	1.476	1.517	1.471	1.517	1.471	1.521
147.5	1.507	1.553	1.503	1.553	1.503	1.548	1.507	1.553	1.503	1.548
150.0	1.539	1.562	1.535	1.562	1.535	1.566	1.544	1.571	1.543	1.571
152.5	1.553	1.548	1.557	1.562	1.553	1.566	1.566	1.571	1.566	1.571
155.0	1.548	1.512	1.557	1.548	1.562	1.562	1.571	1.566	1.571	1.571
157.5	1.485	1.462	1.530	1.489	1.553	1.512	1.571	1.521	1.571	1.521
160.0	1.395	1.372	1.444	1.407	1.463	1.426	1.489	1.448	1.499	1.449
162.5	1.295	1.272	1.341	1.321	1.363	1.331	1.385	1.344	1.400	1.348
165.0	1.182	1.168	1.227	1.195	1.249	1.217	1.277	1.236	1.295	1.236
167.5	1.064	1.037	1.105	1.077	1.136	1.100	1.163	1.113	1.169	1.118
170.0	0.9236	0.8961	0.9651	0.9323	0.9961	0.9683	1.020	0.9818	1.028	0.9823
172.5	0.7747	0.7469	0.8151	0.7831	0.8374	0.8094	0.8652	0.8230	0.8738	0.8277
175.0	0.6476	0.6110	0.6746	0.6378	0.6930	0.6561	0.7111	0.6651	0.7199	0.6651
177.5	0.5298	0.4929	0.5525	0.5021	0.5612	0.5202	0.5704	0.5250	0.5751	0.5199
180.0	0.3803	0.3757	0.3848	0.3803	0.3803	0.3803	0.3848	0.3848	0.3848	0.3803

C角度范围: 0度 - 360度

C角度间隔: 5.0度

测试速度: 快速

环境温度: 25℃

测试人员: yechihong

测试日期: 2020-06-05

γ角度范围: 0度 - 180度

γ角度间隔: 0.5度

测试系统: 远方(EVERFINE)GO-2000A_V1系统 V2.0.272

环境湿度: 70%

测试距离: 8.425米 [K=1.0000]

备注:

Photometric Data Table [cd]

G/C	100.0	105.0	110.0	115.0	120.0	125.0	130.0	135.0	140.0	145.0
0.0	7.397	7.392	7.384	7.365	7.352	7.334	7.316	7.298	7.288	7.284
2.5	8.147	8.085	8.147	8.083	8.142	8.083	8.149	8.077	8.162	7.944
5.0	10.51	10.40	10.47	10.37	10.45	10.35	10.44	10.39	10.55	10.27
7.5	15.43	15.05	15.00	14.50	14.43	14.12	14.15	13.92	14.20	13.90
10.0	22.54	22.12	21.91	21.28	20.90	20.09	19.67	18.82	18.66	18.20
12.5	29.42	28.94	28.73	28.04	27.68	26.76	26.19	25.11	24.51	23.06
15.0	35.43	34.91	34.53	33.85	33.36	32.53	31.86	30.83	30.04	28.46
17.5	40.47	39.87	39.34	38.52	37.94	37.02	36.39	35.37	34.63	33.06
20.0	44.63	43.89	43.21	42.31	41.52	40.62	39.87	38.97	38.22	36.88
22.5	46.91	46.36	45.71	44.87	44.10	43.10	42.39	41.49	40.82	39.72
25.0	46.41	46.37	46.20	45.92	45.33	44.55	43.77	42.96	42.31	41.49
27.5	45.25	45.26	45.08	45.01	44.80	44.60	44.25	43.57	42.91	42.25
30.0	44.02	44.00	43.83	43.79	43.57	43.39	43.10	42.87	42.47	42.17
32.5	42.68	42.67	42.50	42.46	42.25	42.10	41.82	41.57	41.18	41.00
35.0	41.24	41.23	41.05	41.01	40.82	40.68	40.40	40.19	39.81	39.63
37.5	39.69	39.70	39.52	39.51	39.31	39.18	38.89	38.71	38.36	38.22
40.0	38.07	38.10	37.92	37.91	37.72	37.61	37.34	37.16	36.83	36.71
42.5	36.38	36.41	36.25	36.25	36.05	35.96	35.71	35.56	35.23	35.14
45.0	34.62	34.65	34.48	34.52	34.31	34.24	34.00	33.87	33.55	33.51
47.5	32.82	32.86	32.70	32.73	32.53	32.48	32.23	32.14	31.82	31.81
50.0	30.93	30.98	30.84	30.87	30.67	30.65	30.40	30.32	30.03	30.03
52.5	29.00	29.07	28.91	28.97	28.78	28.76	28.54	28.47	28.19	28.24
55.0	27.04	27.10	26.96	27.01	26.83	26.82	26.61	26.56	26.30	26.38
57.5	25.02	25.10	24.96	25.01	24.85	24.87	24.66	24.61	24.39	24.49
60.0	22.98	23.06	22.93	23.00	22.83	22.87	22.67	22.65	22.43	22.55
62.5	20.92	21.00	20.87	20.93	20.78	20.83	20.65	20.66	20.45	20.60
65.0	18.82	18.92	18.79	18.88	18.73	18.78	18.61	18.65	18.44	18.63
67.5	16.72	16.81	16.70	16.78	16.65	16.72	16.55	16.62	16.43	16.63
70.0	14.64	14.73	14.61	14.72	14.58	14.65	14.50	14.58	14.42	14.65
72.5	12.53	12.63	12.51	12.62	12.50	12.58	12.44	12.54	12.40	12.65
75.0	10.46	10.55	10.45	10.56	10.44	10.52	10.43	10.51	10.40	10.66
77.5	8.398	8.504	8.393	8.509	8.398	8.497	8.409	8.498	8.404	8.676
80.0	6.371	6.490	6.391	6.494	6.398	6.499	6.414	6.531	6.450	6.734
82.5	4.451	4.551	4.467	4.558	4.478	4.576	4.507	4.626	4.559	4.848
85.0	2.632	2.717	2.643	2.729	2.678	2.759	2.703	2.804	2.752	3.021
87.5	1.139	1.182	1.150	1.199	1.178	1.231	1.206	1.244	1.209	1.393
90.0	0.7249	0.7243	0.7335	0.7243	0.7289	0.7107	0.7201	0.7288	0.7518	0.7378
92.5	0.7198	0.7243	0.7198	0.7288	0.7198	0.7108	0.7152	0.7288	0.7379	0.7334
95.0	0.7198	0.7379	0.7198	0.7423	0.7198	0.7288	0.7152	0.7425	0.7379	0.7426
97.5	0.7198	0.7560	0.7198	0.7604	0.7198	0.7469	0.7152	0.7560	0.7379	0.7560
100.0	0.7469	0.7832	0.7468	0.7787	0.7333	0.7697	0.7333	0.7787	0.7514	0.7742
102.5	0.7605	0.8104	0.7560	0.8105	0.7557	0.8013	0.7559	0.8061	0.7605	0.7924
105.0	0.8056	0.8422	0.8101	0.8420	0.7875	0.8330	0.7876	0.8468	0.8011	0.8331
107.5	0.8375	0.8919	0.8372	0.8874	0.8281	0.8737	0.8284	0.8918	0.8371	0.8693
110.0	0.9008	0.9284	0.8872	0.9326	0.8778	0.9192	0.8870	0.9281	0.8826	0.9100
112.5	0.9234	0.9734	0.9186	0.9643	0.9187	0.9599	0.9099	0.9644	0.9141	0.9466
115.0	0.9642	1.019	0.9642	1.010	0.9642	1.005	0.9732	1.010	0.9687	0.9914
117.5	1.018	1.064	1.000	1.055	1.000	1.046	1.005	1.059	1.005	1.037
120.0	1.050	1.105	1.041	1.096	1.041	1.091	1.046	1.100	1.041	1.077
122.5	1.109	1.150	1.082	1.145	1.095	1.132	1.091	1.145	1.086	1.118
125.0	1.141	1.191	1.127	1.186	1.132	1.182	1.136	1.186	1.132	1.164
127.5	1.186	1.236	1.181	1.232	1.186	1.227	1.186	1.227	1.182	1.209
130.0	1.231	1.277	1.209	1.272	1.227	1.268	1.218	1.272	1.218	1.254
132.5	1.268	1.322	1.254	1.313	1.263	1.308	1.263	1.317	1.258	1.295
135.0	1.326	1.363	1.308	1.358	1.322	1.349	1.313	1.354	1.312	1.345
137.5	1.353	1.403	1.344	1.399	1.344	1.390	1.349	1.395	1.349	1.385
140.0	1.394	1.440	1.394	1.440	1.390	1.435	1.394	1.435	1.399	1.426
142.5	1.435	1.485	1.426	1.480	1.426	1.471	1.426	1.476	1.426	1.467
145.0	1.471	1.526	1.471	1.521	1.476	1.512	1.471	1.517	1.476	1.507
147.5	1.503	1.562	1.507	1.557	1.507	1.557	1.503	1.535	1.503	1.507
150.0	1.548	1.571	1.544	1.566	1.548	1.553	1.548	1.535	1.521	1.508
152.5	1.571	1.571	1.562	1.566	1.566	1.548	1.548	1.516	1.521	1.485
155.0	1.571	1.566	1.571	1.548	1.562	1.516	1.548	1.476	1.503	1.439
157.5	1.567	1.516	1.553	1.493	1.530	1.466	1.476	1.403	1.431	1.371
160.0	1.490	1.430	1.472	1.412	1.445	1.376	1.386	1.322	1.340	1.281
162.5	1.390	1.335	1.372	1.317	1.340	1.267	1.290	1.213	1.241	1.181
165.0	1.282	1.226	1.254	1.195	1.227	1.163	1.177	1.113	1.128	1.068
167.5	1.164	1.104	1.145	1.077	1.101	1.041	1.055	0.9866	1.010	0.9541
170.0	1.028	0.9772	1.005	0.9500	0.9690	0.9004	0.9238	0.8504	0.8742	0.8140
172.5	0.8741	0.8191	0.8564	0.7874	0.8200	0.7513	0.7795	0.7061	0.7248	0.6695
175.0	0.7201	0.6697	0.7019	0.6381	0.6702	0.6062	0.6385	0.5652	0.5886	0.5339
177.5	0.5661	0.5202	0.5570	0.4885	0.5252	0.4661	0.4981	0.4342	0.4753	0.4164
180.0	0.3893	0.3803	0.3848	0.3803	0.3757	0.3712	0.3712	0.3667	0.3712	0.3712

C角度范围: 0度 - 360度

C角度间隔: 5.0度

测试速度: 快速

环境温度: 25℃

测试人员: yechihong

测试日期: 2020-06-05

γ角度范围: 0度 - 180度

γ角度间隔: 0.5度

测试系统: 远方(EVERFINE)GO-2000A_V1系统 V2.0.272

环境湿度: 70%

测试距离: 8.425米 [K=1.0000]

备注:

Photometric Data Table [cd]

G/C	150.0	155.0	160.0	165.0	170.0	175.0	180.0	185.0	190.0	195.0
0.0	7.285	7.275	7.289	7.284	7.289	7.293	7.302	7.298	7.311	7.317
2.5	8.016	7.944	8.035	7.972	8.061	8.006	8.047	8.106	8.031	8.100
5.0	10.44	10.42	10.69	10.64	10.85	10.76	10.81	10.94	10.78	10.84
7.5	14.28	14.29	14.62	14.58	14.84	14.75	14.85	14.98	14.78	14.83
10.0	18.50	18.45	18.76	18.70	18.96	18.85	18.99	19.07	18.89	18.98
12.5	23.03	22.91	23.05	22.93	23.15	23.00	23.15	23.25	23.09	23.20
15.0	27.77	27.24	27.16	26.93	26.98	26.85	27.01	27.07	26.99	27.18
17.5	32.29	31.35	30.96	30.53	30.47	30.27	30.40	30.48	30.48	30.78
20.0	36.10	35.19	34.63	34.01	33.79	33.55	33.65	33.74	33.83	34.28
22.5	39.03	38.32	37.75	37.15	36.83	36.54	36.60	36.71	36.90	37.36
25.0	40.98	40.43	40.06	39.58	39.35	39.06	39.14	39.21	39.36	39.79
27.5	41.79	41.46	41.22	41.04	40.93	40.78	40.89	40.95	41.02	41.16
30.0	41.74	41.46	41.35	41.28	41.28	41.21	41.32	41.36	41.31	41.36
32.5	40.63	40.49	40.36	40.39	40.40	40.41	40.51	40.48	40.47	40.40
35.0	39.28	39.14	39.03	39.06	39.06	39.08	39.18	39.15	39.12	39.06
37.5	37.87	37.76	37.63	37.67	37.66	37.72	37.78	37.73	37.72	37.65
40.0	36.39	36.29	36.16	36.20	36.19	36.23	36.28	36.24	36.25	36.16
42.5	34.81	34.73	34.60	34.66	34.63	34.69	34.73	34.68	34.71	34.59
45.0	33.20	33.13	32.98	33.06	33.01	33.10	33.11	33.06	33.11	32.99
47.5	31.51	31.45	31.32	31.39	31.34	31.43	31.45	31.39	31.44	31.30
50.0	29.75	29.71	29.59	29.66	29.61	29.70	29.72	29.65	29.71	29.58
52.5	27.98	27.96	27.81	27.89	27.84	27.93	27.92	27.89	27.93	27.80
55.0	26.13	26.12	25.99	26.07	26.01	26.12	26.09	26.04	26.12	26.00
57.5	24.26	24.25	24.14	24.22	24.15	24.26	24.26	24.20	24.26	24.14
60.0	22.36	22.37	22.25	22.35	22.27	22.39	22.36	22.31	22.36	22.24
62.5	20.41	20.44	20.34	20.43	20.36	20.48	20.47	20.38	20.44	20.33
65.0	18.47	18.51	18.41	18.52	18.44	18.55	18.52	18.45	18.50	18.40
67.5	16.48	16.56	16.46	16.57	16.50	16.60	16.58	16.52	16.55	16.44
70.0	14.51	14.60	14.52	14.64	14.57	14.66	14.63	14.56	14.62	14.50
72.5	12.52	12.63	12.56	12.69	12.62	12.71	12.66	12.59	12.67	12.54
75.0	10.56	10.68	10.63	10.76	10.69	10.79	10.74	10.67	10.74	10.62
77.5	8.605	8.738	8.691	8.829	8.778	8.878	8.815	8.750	8.813	8.687
80.0	6.672	6.822	6.781	6.937	6.889	6.985	6.938	6.871	6.935	6.790
82.5	4.802	4.955	4.927	5.082	5.053	5.155	5.109	5.046	5.088	4.949
85.0	3.000	3.141	3.122	3.268	3.258	3.373	3.318	3.258	3.283	3.140
87.5	1.386	1.491	1.469	1.574	1.563	1.656	1.619	1.560	1.572	1.465
90.0	0.7568	0.7334	0.7609	0.7423	0.7704	0.7333	0.7062	0.7245	0.7062	0.7245
92.5	0.7424	0.7334	0.7469	0.7379	0.7514	0.7288	0.7062	0.7063	0.7062	0.7062
95.0	0.7379	0.7380	0.7379	0.7379	0.7379	0.7289	0.7107	0.7062	0.7107	0.7017
97.5	0.7379	0.7515	0.7379	0.7468	0.7379	0.7424	0.7243	0.7062	0.7199	0.7017
100.0	0.7379	0.7696	0.7379	0.7606	0.7379	0.7562	0.7424	0.7062	0.7336	0.7017
102.5	0.7469	0.7922	0.7560	0.7831	0.7469	0.7788	0.7652	0.7287	0.7697	0.7242
105.0	0.7741	0.8151	0.7648	0.8150	0.7695	0.8104	0.7968	0.7424	0.8013	0.7515
107.5	0.8103	0.8556	0.8144	0.8511	0.8144	0.8511	0.8241	0.7741	0.8284	0.7831
110.0	0.8508	0.9008	0.8465	0.8874	0.8329	0.8875	0.8694	0.8194	0.8647	0.8148
112.5	0.8964	0.9373	0.8961	0.9282	0.8998	0.9281	0.9057	0.8600	0.9060	0.8643
115.0	0.9280	0.9780	0.9234	0.9733	0.9143	0.9688	0.9463	0.8963	0.9552	0.9052
117.5	0.9778	1.028	0.9687	1.010	0.9687	1.019	0.9870	0.9504	0.9961	0.9596
120.0	1.032	1.069	1.032	1.059	1.009	1.050	1.041	0.9867	1.037	0.9914
122.5	1.068	1.109	1.064	1.100	1.050	1.105	1.078	1.028	1.082	1.032
125.0	1.118	1.159	1.105	1.154	1.109	1.150	1.127	1.082	1.132	1.077
127.5	1.177	1.209	1.154	1.200	1.145	1.200	1.163	1.127	1.182	1.127
130.0	1.204	1.245	1.195	1.245	1.195	1.241	1.218	1.181	1.222	1.190
132.5	1.245	1.299	1.254	1.290	1.236	1.295	1.263	1.213	1.272	1.218
135.0	1.286	1.340	1.295	1.336	1.285	1.336	1.308	1.263	1.313	1.267
137.5	1.331	1.381	1.331	1.381	1.326	1.381	1.354	1.321	1.363	1.317
140.0	1.381	1.426	1.380	1.417	1.371	1.422	1.399	1.354	1.408	1.349
142.5	1.417	1.471	1.421	1.462	1.408	1.467	1.435	1.399	1.444	1.394
145.0	1.471	1.494	1.471	1.485	1.462	1.480	1.471	1.435	1.471	1.444
147.5	1.494	1.494	1.489	1.485	1.480	1.480	1.471	1.471	1.471	1.471
150.0	1.503	1.489	1.494	1.480	1.480	1.471	1.453	1.485	1.467	1.476
152.5	1.503	1.467	1.494	1.453	1.480	1.430	1.403	1.471	1.430	1.480
155.0	1.476	1.412	1.453	1.398	1.426	1.367	1.358	1.417	1.376	1.440
157.5	1.403	1.335	1.377	1.321	1.354	1.308	1.290	1.354	1.316	1.363
160.0	1.313	1.249	1.277	1.222	1.259	1.209	1.209	1.263	1.217	1.277
162.5	1.209	1.149	1.173	1.108	1.155	1.104	1.100	1.159	1.113	1.168
165.0	1.091	1.027	1.046	0.9821	1.028	0.9732	0.9773	1.032	0.9953	1.051
167.5	0.9603	0.8915	0.9194	0.8683	0.8972	0.8419	0.8418	0.9100	0.8778	0.9238
170.0	0.8289	0.7510	0.7838	0.7331	0.7566	0.7062	0.7145	0.7703	0.7419	0.7884
172.5	0.6883	0.6065	0.6431	0.5658	0.5937	0.5473	0.5613	0.6112	0.5700	0.6296
175.0	0.5613	0.4930	0.5206	0.4614	0.4981	0.4525	0.4569	0.5070	0.4617	0.5164
177.5	0.4571	0.3893	0.4391	0.3802	0.4211	0.3757	0.3802	0.4255	0.3803	0.4346
180.0	0.3712	0.3712	0.3712	0.3667	0.3667	0.3621	0.3621	0.3667	0.3667	0.3712

C角度范围: 0度 - 360度

C角度间隔: 5.0度

测试速度: 快速

环境温度: 25℃

测试人员: yechihong

测试日期: 2020-06-05

Y角度范围: 0度 - 180度

Y角度间隔: 0.5度

测试系统: 远方(EVERFINE)GO-2000A_V1系统 V2.0.272

环境湿度: 70%

测试距离: 8.425米 [K=1.0000]

备注:

Photometric Data Table [cd]

G/C	200.0	205.0	210.0	215.0	220.0	225.0	230.0	235.0	240.0	245.0
0.0	7.316	7.330	7.338	7.357	7.365	7.374	7.397	7.393	7.407	7.424
2.5	8.026	8.132	8.083	8.152	8.087	8.213	8.172	8.225	8.154	8.218
5.0	10.61	10.69	10.54	10.52	10.39	10.52	10.47	10.54	10.45	10.54
7.5	14.54	14.60	14.35	14.26	13.87	14.12	14.11	14.34	14.41	14.79
10.0	18.69	18.80	18.60	18.52	18.32	19.03	19.56	20.38	20.82	21.47
12.5	23.03	23.21	23.23	23.55	24.06	25.35	26.04	27.01	27.44	28.20
15.0	27.20	27.65	28.09	29.00	29.76	31.02	31.82	32.67	33.20	33.90
17.5	31.02	31.80	32.55	33.62	34.39	35.57	36.31	37.22	37.77	38.65
20.0	34.74	35.62	36.39	37.37	38.12	39.13	39.93	40.81	41.55	42.46
22.5	37.88	38.62	39.31	40.11	40.78	41.67	42.45	43.35	44.16	45.08
25.0	40.14	40.72	41.21	41.82	42.41	43.19	43.94	44.73	45.49	46.02
27.5	41.37	41.63	42.00	42.47	43.12	43.75	44.33	44.64	44.91	45.05
30.0	41.40	41.57	41.84	42.24	42.66	42.94	43.24	43.41	43.67	43.78
32.5	40.42	40.47	40.71	40.98	41.38	41.62	41.92	42.08	42.34	42.43
35.0	39.11	39.14	39.36	39.62	40.02	40.22	40.51	40.66	40.91	40.99
37.5	37.70	37.71	37.94	38.17	38.56	38.73	39.02	39.15	39.39	39.45
40.0	36.25	36.23	36.44	36.64	37.03	37.18	37.46	37.56	37.81	37.85
42.5	34.67	34.65	34.86	35.06	35.43	35.55	35.83	35.92	36.15	36.18
45.0	33.08	33.04	33.24	33.42	33.75	33.88	34.13	34.19	34.42	34.45
47.5	31.42	31.35	31.54	31.70	32.03	32.10	32.37	32.43	32.63	32.66
50.0	29.67	29.59	29.81	29.94	30.23	30.30	30.54	30.57	30.78	30.78
52.5	27.91	27.84	28.01	28.12	28.40	28.44	28.67	28.70	28.89	28.87
55.0	26.07	26.00	26.16	26.26	26.53	26.53	26.75	26.78	26.96	26.93
57.5	24.22	24.13	24.29	24.36	24.61	24.60	24.78	24.79	24.96	24.94
60.0	22.32	22.22	22.38	22.42	22.65	22.62	22.79	22.77	22.95	22.93
62.5	20.39	20.29	20.43	20.45	20.68	20.61	20.78	20.74	20.92	20.87
65.0	18.46	18.35	18.46	18.48	18.68	18.61	18.75	18.70	18.85	18.79
67.5	16.50	16.38	16.49	16.48	16.65	16.56	16.69	16.63	16.77	16.71
70.0	14.56	14.43	14.52	14.47	14.64	14.51	14.63	14.57	14.70	14.63
72.5	12.60	12.46	12.53	12.47	12.61	12.49	12.57	12.50	12.62	12.53
75.0	10.68	10.50	10.56	10.49	10.61	10.46	10.54	10.46	10.57	10.48
77.5	8.733	8.574	8.595	8.517	8.615	8.456	8.522	8.431	8.533	8.438
80.0	6.834	6.658	6.679	6.575	6.659	6.484	6.547	6.445	6.537	6.437
82.5	4.955	4.788	4.800	4.689	4.757	4.575	4.626	4.517	4.602	4.512
85.0	3.154	2.994	2.993	2.881	2.938	2.777	2.808	2.719	2.776	2.691
87.5	1.486	1.371	1.356	1.286	1.313	1.218	1.248	1.189	1.221	1.162
90.0	0.7017	0.7204	0.7017	0.7108	0.6970	0.6844	0.6745	0.6708	0.6699	0.6885
92.5	0.7017	0.7017	0.7017	0.6971	0.6974	0.6790	0.6836	0.6654	0.6746	0.6790
95.0	0.7062	0.7017	0.7152	0.6971	0.7197	0.6790	0.7017	0.6654	0.6927	0.6790
97.5	0.7200	0.7017	0.7288	0.6971	0.7336	0.6790	0.7245	0.6742	0.7243	0.6790
100.0	0.7470	0.7017	0.7473	0.7061	0.7651	0.7107	0.7561	0.6971	0.7471	0.7061
102.5	0.7696	0.7331	0.7788	0.7468	0.7967	0.7515	0.7923	0.7730	0.7877	0.7424
105.0	0.8013	0.7515	0.8104	0.7739	0.8285	0.7785	0.8241	0.7740	0.8239	0.7740
107.5	0.8420	0.7876	0.8511	0.8191	0.8647	0.8194	0.8603	0.8192	0.8648	0.8194
110.0	0.8737	0.8280	0.8873	0.8375	0.9012	0.8553	0.9010	0.8465	0.8967	0.8510
112.5	0.9145	0.8776	0.9281	0.9008	0.9506	0.8963	0.9462	0.8965	0.9464	0.9007
115.0	0.9553	0.9098	0.9733	0.9278	0.9869	0.9548	0.9914	0.9367	0.9825	0.9414
117.5	1.005	0.9549	1.014	0.9687	1.028	0.9865	1.028	0.9776	1.028	0.9778
120.0	1.041	0.9959	1.055	1.014	1.073	1.045	1.073	1.032	1.068	1.037
122.5	1.086	1.041	1.096	1.055	1.118	1.073	1.123	1.064	1.114	1.068
125.0	1.132	1.091	1.146	1.109	1.159	1.114	1.164	1.109	1.159	1.113
127.5	1.177	1.132	1.186	1.145	1.204	1.172	1.209	1.150	1.245	1.159
130.0	1.232	1.182	1.236	1.186	1.249	1.195	1.249	1.191	1.245	1.195
132.5	1.272	1.218	1.277	1.235	1.290	1.240	1.295	1.240	1.290	1.245
135.0	1.313	1.267	1.322	1.272	1.335	1.285	1.340	1.285	1.331	1.289
137.5	1.363	1.326	1.372	1.331	1.381	1.331	1.381	1.335	1.376	1.322
140.0	1.399	1.354	1.417	1.367	1.417	1.371	1.421	1.367	1.417	1.367
142.5	1.449	1.399	1.458	1.408	1.462	1.408	1.462	1.408	1.463	1.408
145.0	1.485	1.444	1.498	1.453	1.503	1.462	1.503	1.457	1.499	1.462
147.5	1.480	1.476	1.494	1.485	1.512	1.494	1.544	1.485	1.544	1.494
150.0	1.476	1.485	1.489	1.503	1.512	1.525	1.548	1.525	1.553	1.526
152.5	1.453	1.485	1.471	1.503	1.503	1.526	1.548	1.548	1.553	1.557
155.0	1.394	1.462	1.426	1.494	1.471	1.530	1.503	1.548	1.544	1.562
157.5	1.331	1.390	1.358	1.426	1.398	1.467	1.448	1.517	1.489	1.557
160.0	1.240	1.304	1.272	1.345	1.322	1.390	1.367	1.440	1.408	1.480
162.5	1.141	1.204	1.177	1.246	1.222	1.286	1.272	1.345	1.321	1.381
165.0	1.032	1.087	1.063	1.137	1.118	1.187	1.176	1.232	1.199	1.268
167.5	0.8909	0.9514	0.9369	1.014	0.9911	1.060	1.045	1.110	1.082	1.150
170.0	0.7469	0.8155	0.8007	0.8786	0.8685	0.9283	0.9094	0.9734	0.9549	1.019
172.5	0.6066	0.6838	0.6609	0.7386	0.7283	0.7882	0.7645	0.8291	0.8051	0.8647
175.0	0.4888	0.5570	0.5339	0.6025	0.5790	0.6429	0.6154	0.6841	0.6467	0.7111
177.5	0.3893	0.4573	0.4163	0.4799	0.4566	0.5117	0.4705	0.5344	0.4975	0.5614
180.0	0.3667	0.3712	0.3712	0.3757	0.3757	0.3803	0.3757	0.3757	0.3757	0.3803

C角度范围: 0度 - 360度

C角度间隔: 5.0度

测试速度: 快速

环境温度: 25℃

测试人员: yechihong

测试日期: 2020-06-05

γ角度范围: 0度 - 180度

γ角度间隔: 0.5度

测试系统: 远方(EVERFINE)GO-2000A_V1系统 V2.0.272

环境湿度: 70%

测试距离: 8.425米 [K=1.0000]

备注:

Photometric Data Table [cd]

G/C	250.0	255.0	260.0	265.0	270.0	275.0	280.0	285.0	290.0	295.0
0.0	7.425	7.425	7.424	7.429	7.416	7.406	7.397	7.392	7.384	7.365
2.5	8.160	8.209	8.136	8.186	8.116	8.152	8.093	8.134	8.059	8.109
5.0	10.48	10.56	10.47	10.55	10.44	10.52	10.41	10.49	10.36	10.44
7.5	14.85	15.27	15.25	15.51	15.37	15.53	15.30	15.35	14.98	14.95
10.0	21.72	22.17	22.22	22.51	22.41	22.58	22.36	22.37	21.98	21.83
12.5	28.41	28.93	29.01	29.34	29.25	29.46	29.22	29.23	28.81	28.65
15.0	34.30	34.88	35.08	35.50	35.44	35.59	35.31	35.20	34.74	34.43
17.5	39.14	39.88	40.21	40.66	40.72	40.76	40.41	40.10	39.45	39.00
20.0	43.18	44.02	44.50	45.02	45.11	45.12	44.68	44.19	43.41	42.75
22.5	45.77	46.52	46.96	47.25	47.37	47.30	47.10	46.68	45.99	45.29
25.0	46.32	46.42	46.52	46.57	46.61	46.60	46.58	46.51	46.45	46.18
27.5	45.19	45.27	45.36	45.41	45.47	45.45	45.44	45.36	45.30	45.19
30.0	43.93	44.01	44.11	44.13	44.19	44.16	44.18	44.09	44.05	43.91
32.5	42.58	42.64	42.76	42.78	42.82	42.81	42.83	42.74	42.71	42.57
35.0	41.15	41.15	41.31	41.32	41.37	41.36	41.38	41.27	41.26	41.16
37.5	39.62	39.63	39.76	39.76	39.83	39.79	39.85	39.73	39.73	39.64
40.0	38.03	38.04	38.15	38.14	38.20	38.17	38.23	38.13	38.14	38.01
42.5	36.35	36.32	36.47	36.44	36.52	36.46	36.55	36.44	36.46	36.36
45.0	34.61	34.56	34.71	34.68	34.79	34.70	34.80	34.69	34.72	34.63
47.5	32.81	32.77	32.90	32.87	32.97	32.90	33.00	32.89	32.93	32.80
50.0	30.95	30.89	31.02	31.00	31.09	31.01	31.12	31.00	31.05	30.93
52.5	29.04	29.00	29.12	29.08	29.18	29.09	29.19	29.08	29.14	29.01
55.0	27.08	27.02	27.16	27.09	27.23	27.12	27.23	27.11	27.18	27.05
57.5	25.08	25.01	25.15	25.05	25.21	25.11	25.21	25.12	25.19	25.06
60.0	23.04	23.00	23.11	23.04	23.16	23.08	23.16	23.07	23.15	23.03
62.5	21.00	20.94	21.05	20.98	21.09	21.00	21.10	21.00	21.09	20.98
65.0	18.92	18.85	18.97	18.88	19.01	18.92	19.01	18.93	19.02	18.91
67.5	16.83	16.75	16.86	16.77	16.91	16.80	16.91	16.82	16.92	16.83
70.0	14.74	14.65	14.77	14.69	14.80	14.71	14.82	14.72	14.83	14.73
72.5	12.64	12.55	12.68	12.58	12.69	12.60	12.72	12.63	12.74	12.63
75.0	10.58	10.49	10.59	10.51	10.62	10.53	10.64	10.55	10.67	10.58
77.5	8.531	8.445	8.531	8.450	8.559	8.475	8.588	8.497	8.610	8.531
80.0	6.521	6.430	6.528	6.437	6.548	6.466	6.569	6.491	6.600	6.538
82.5	4.585	4.498	4.590	4.503	4.603	4.519	4.633	4.553	4.665	4.598
85.0	2.749	2.674	2.748	2.677	2.767	2.696	2.792	2.733	2.823	2.771
87.5	1.190	1.150	1.190	1.150	1.202	1.164	1.224	1.191	1.250	1.229
90.0	0.6745	0.6793	0.6698	0.6702	0.6610	0.6750	0.6744	0.6795	0.6835	0.6889
92.5	0.6836	0.6700	0.6791	0.6700	0.6790	0.6700	0.6836	0.6745	0.6926	0.6790
95.0	0.7062	0.6700	0.6972	0.6700	0.7018	0.6700	0.7017	0.6745	0.7018	0.6790
97.5	0.7243	0.6744	0.7244	0.6790	0.7199	0.6789	0.7288	0.6790	0.7289	0.6835
100.0	0.7560	0.6971	0.7562	0.7061	0.7515	0.7016	0.7561	0.7061	0.7517	0.7060
102.5	0.7922	0.7470	0.7877	0.7515	0.7923	0.7604	0.7880	0.7513	0.7878	0.7469
105.0	0.8284	0.7741	0.8240	0.7741	0.8286	0.7786	0.8241	0.7739	0.8240	0.7696
107.5	0.8692	0.8147	0.8603	0.8194	0.8650	0.8149	0.8649	0.8237	0.8648	0.8192
110.0	0.9100	0.8510	0.9012	0.8601	0.9100	0.8554	0.9100	0.8555	0.9010	0.8510
112.5	0.9507	0.8962	0.9507	0.9008	0.9553	0.8962	0.9463	0.9008	0.9506	0.8918
115.0	0.9914	0.9412	0.9873	0.9547	0.9915	0.9501	0.9914	0.9459	0.9823	0.9370
117.5	1.032	0.9777	1.032	0.9867	1.032	0.9865	1.032	0.9775	1.028	0.9775
120.0	1.073	1.032	1.082	1.037	1.078	1.041	1.082	1.037	1.073	1.032
122.5	1.123	1.068	1.123	1.068	1.123	1.068	1.119	1.064	1.114	1.064
125.0	1.163	1.109	1.164	1.109	1.164	1.113	1.159	1.105	1.164	1.109
127.5	1.209	1.163	1.204	1.167	1.204	1.163	1.204	1.154	1.204	1.150
130.0	1.254	1.199	1.250	1.200	1.245	1.195	1.250	1.199	1.245	1.186
132.5	1.290	1.249	1.286	1.240	1.290	1.245	1.290	1.249	1.282	1.240
135.0	1.340	1.281	1.335	1.286	1.335	1.285	1.331	1.281	1.331	1.272
137.5	1.376	1.326	1.376	1.326	1.376	1.331	1.372	1.335	1.372	1.331
140.0	1.421	1.363	1.417	1.367	1.417	1.363	1.417	1.363	1.408	1.358
142.5	1.462	1.407	1.462	1.412	1.458	1.403	1.458	1.408	1.453	1.403
145.0	1.503	1.457	1.499	1.457	1.494	1.458	1.503	1.453	1.490	1.448
147.5	1.539	1.489	1.544	1.485	1.539	1.485	1.535	1.485	1.535	1.485
150.0	1.562	1.521	1.571	1.521	1.575	1.530	1.566	1.525	1.557	1.521
152.5	1.562	1.557	1.566	1.562	1.571	1.557	1.566	1.557	1.557	1.548
155.0	1.557	1.566	1.571	1.571	1.575	1.571	1.562	1.562	1.557	1.553
157.5	1.512	1.571	1.530	1.575	1.529	1.575	1.525	1.566	1.503	1.535
160.0	1.444	1.494	1.462	1.512	1.466	1.508	1.457	1.494	1.430	1.462
162.5	1.340	1.399	1.362	1.417	1.366	1.417	1.349	1.390	1.335	1.368
165.0	1.231	1.290	1.253	1.309	1.258	1.304	1.249	1.277	1.222	1.254
167.5	1.113	1.173	1.131	1.187	1.136	1.182	1.122	1.164	1.108	1.132
170.0	0.9778	1.042	1.004	1.055	1.005	1.050	0.9954	1.024	0.9637	0.9918
172.5	0.8284	0.8829	0.8461	0.8964	0.8510	0.8919	0.8367	0.8741	0.8188	0.8474
175.0	0.6694	0.7292	0.6833	0.7338	0.6880	0.7294	0.6788	0.7114	0.6603	0.6976
177.5	0.5202	0.5708	0.5248	0.5798	0.5338	0.5840	0.5248	0.5707	0.5203	0.5614
180.0	0.3803	0.3803	0.3803	0.3803	0.3803	0.3848	0.3848	0.3803	0.3803	0.3757

C角度范围: 0度 - 360度

C角度间隔: 5.0度

测试速度: 快速

环境温度: 25℃

测试人员: yechihong

测试日期: 2020-06-05

γ角度范围: 0度 - 180度

γ角度间隔: 0.5度

测试系统: 远方(EVERFINE)GO-2000A_V1系统 V2.0.272

环境湿度: 70%

测试距离: 8.425米 [K=1.0000]

备注:

Photometric Data Table [cd]

G/C	300.0	305.0	310.0	315.0	320.0	325.0	330.0	335.0	340.0	345.0
0.0	7.352	7.334	7.316	7.298	7.288	7.284	7.285	7.275	7.289	7.284
2.5	8.036	8.080	8.008	8.064	8.010	8.262	8.208	8.311	8.226	8.328
5.0	10.33	10.41	10.33	10.41	10.36	10.80	10.80	10.99	10.98	11.23
7.5	14.50	14.47	14.22	14.24	14.07	14.70	14.76	15.18	15.18	15.49
10.0	21.19	20.88	20.09	19.68	18.88	19.37	19.41	19.69	19.69	19.88
12.5	27.94	27.56	26.65	26.10	25.03	25.04	24.33	24.40	24.24	24.31
15.0	33.83	33.33	32.52	31.85	30.83	30.53	29.57	29.07	28.53	28.47
17.5	38.26	37.74	36.94	36.31	35.33	34.96	33.93	33.25	32.42	32.06
20.0	41.85	41.17	40.35	39.66	38.84	38.41	37.55	36.85	36.02	35.46
22.5	44.34	43.60	42.68	42.00	41.21	40.81	40.10	39.54	38.86	38.35
25.0	45.64	44.92	44.10	43.35	42.67	42.18	41.65	41.27	40.83	40.51
27.5	45.06	44.90	44.56	43.94	43.30	42.70	42.27	41.96	41.81	41.63
30.0	43.82	43.65	43.49	43.19	42.91	42.40	42.04	41.78	41.69	41.71
32.5	42.53	42.34	42.16	41.86	41.61	41.09	40.88	40.64	40.65	40.68
35.0	41.09	40.88	40.76	40.44	40.20	39.71	39.51	39.26	39.31	39.32
37.5	39.56	39.36	39.24	38.95	38.73	38.22	38.05	37.82	37.86	37.88
40.0	37.98	37.76	37.68	37.39	37.21	36.69	36.54	36.31	36.37	36.38
42.5	36.30	36.10	36.05	35.77	35.60	35.09	34.95	34.73	34.79	34.81
45.0	34.57	34.40	34.32	34.08	33.94	33.42	33.29	33.10	33.16	33.18
47.5	32.80	32.60	32.56	32.31	32.19	31.69	31.58	31.37	31.47	31.47
50.0	30.94	30.75	30.72	30.49	30.39	29.90	29.81	29.62	29.71	29.71
52.5	29.04	28.86	28.85	28.63	28.55	28.07	27.99	27.81	27.90	27.89
55.0	27.09	26.93	26.92	26.71	26.66	26.17	26.13	25.96	26.06	26.04
57.5	25.10	24.94	24.96	24.75	24.72	24.27	24.25	24.09	24.18	24.17
60.0	23.08	22.94	22.97	22.76	22.77	22.34	22.31	22.16	22.27	22.25
62.5	21.05	20.89	20.95	20.74	20.77	20.34	20.35	20.21	20.33	20.31
65.0	19.00	18.86	18.91	18.73	18.76	18.37	18.38	18.25	18.37	18.35
67.5	16.90	16.78	16.84	16.69	16.74	16.37	16.40	16.27	16.40	16.38
70.0	14.82	14.70	14.79	14.66	14.71	14.35	14.41	14.29	14.44	14.42
72.5	12.74	12.64	12.71	12.60	12.67	12.35	12.42	12.33	12.46	12.45
75.0	10.68	10.58	10.67	10.58	10.67	10.37	10.45	10.38	10.53	10.51
77.5	8.649	8.560	8.656	8.565	8.672	8.395	8.488	8.434	8.586	8.572
80.0	6.632	6.566	6.675	6.597	6.718	6.450	6.571	6.509	6.687	6.671
82.5	4.706	4.634	4.751	4.684	4.806	4.557	4.683	4.648	4.816	4.820
85.0	2.875	2.823	2.930	2.868	2.980	2.770	2.883	2.846	3.009	3.016
87.5	1.301	1.271	1.333	1.292	1.342	1.191	1.264	1.245	1.346	1.347
90.0	0.6745	0.6793	0.6790	0.6980	0.7062	0.7109	0.7017	0.7289	0.7107	0.7292
92.5	0.6836	0.6700	0.6792	0.6926	0.7062	0.7062	0.7107	0.7152	0.7107	0.7197
95.0	0.7017	0.6700	0.7017	0.6926	0.7109	0.7062	0.7152	0.7107	0.7153	0.7152
97.5	0.7198	0.6745	0.7244	0.6926	0.7382	0.7062	0.7244	0.7107	0.7288	0.7152
100.0	0.7470	0.6968	0.7517	0.7152	0.7650	0.7062	0.7474	0.7107	0.7470	0.7152
102.5	0.7877	0.7421	0.7877	0.7515	0.7922	0.7557	0.7832	0.7422	0.7786	0.7377
105.0	0.8150	0.7605	0.8240	0.7741	0.8239	0.7694	0.8103	0.7605	0.8103	0.7559
107.5	0.8558	0.8100	0.8601	0.8194	0.8602	0.8054	0.8466	0.7967	0.8420	0.7875
110.0	0.8923	0.8464	0.8965	0.8510	0.8966	0.8375	0.8783	0.8284	0.8785	0.8236
112.5	0.9374	0.8963	0.9417	0.8963	0.9372	0.8962	0.9235	0.8781	0.9190	0.8732
115.0	0.9780	0.9235	0.9869	0.9325	0.9779	0.9188	0.9642	0.9187	0.9552	0.9008
117.5	1.028	0.9688	1.019	0.9733	1.019	0.9641	1.005	0.9642	1.005	0.9596
120.0	1.059	1.014	1.060	1.036	1.064	1.005	1.050	0.9914	1.041	0.9914
122.5	1.109	1.055	1.109	1.059	1.109	1.046	1.087	1.046	1.091	1.041
125.0	1.146	1.109	1.154	1.105	1.146	1.091	1.132	1.100	1.128	1.086
127.5	1.195	1.141	1.195	1.145	1.186	1.127	1.177	1.127	1.168	1.123
130.0	1.240	1.186	1.240	1.191	1.231	1.182	1.218	1.195	1.222	1.181
132.5	1.281	1.227	1.277	1.235	1.272	1.218	1.268	1.226	1.263	1.218
135.0	1.317	1.263	1.318	1.272	1.317	1.263	1.308	1.258	1.313	1.258
137.5	1.367	1.326	1.363	1.326	1.363	1.317	1.354	1.313	1.354	1.313
140.0	1.408	1.349	1.399	1.362	1.403	1.349	1.399	1.349	1.399	1.349
142.5	1.449	1.399	1.444	1.394	1.444	1.394	1.444	1.394	1.435	1.399
145.0	1.485	1.435	1.490	1.435	1.480	1.435	1.480	1.430	1.480	1.430
147.5	1.530	1.480	1.521	1.480	1.494	1.471	1.476	1.471	1.476	1.471
150.0	1.548	1.507	1.521	1.503	1.494	1.480	1.471	1.471	1.467	1.476
152.5	1.548	1.539	1.512	1.507	1.480	1.480	1.471	1.480	1.435	1.476
155.0	1.530	1.539	1.480	1.499	1.449	1.467	1.403	1.444	1.394	1.426
157.5	1.476	1.499	1.421	1.431	1.381	1.399	1.335	1.376	1.326	1.358
160.0	1.398	1.422	1.349	1.349	1.299	1.318	1.249	1.291	1.226	1.268
162.5	1.307	1.322	1.249	1.259	1.204	1.214	1.145	1.182	1.118	1.159
165.0	1.186	1.213	1.140	1.141	1.095	1.096	1.036	1.051	1.000	1.037
167.5	1.067	1.087	1.032	1.010	0.9636	0.9645	0.8873	0.9196	0.8729	0.9057
170.0	0.9322	0.9514	0.8815	0.8786	0.8274	0.8195	0.7466	0.7793	0.7333	0.7652
172.5	0.7831	0.8017	0.7423	0.7427	0.6918	0.6927	0.6156	0.6477	0.5877	0.6113
175.0	0.6380	0.6700	0.6020	0.6248	0.5658	0.5841	0.5204	0.5481	0.4798	0.5206
177.5	0.5065	0.5433	0.4797	0.5161	0.4616	0.4844	0.4164	0.4573	0.3938	0.4391
180.0	0.3757	0.3712	0.3712	0.3667	0.3395	0.3667	0.3667	0.3667	0.3667	0.3667

C角度范围: 0度 - 360度

C角度间隔: 5.0度

测试速度: 快速

环境温度: 25℃

测试人员: yechihong

测试日期: 2020-06-05

Y角度范围: 0度 - 180度

Y角度间隔: 0.5度

测试系统: 远方(EVERFINE)GO-2000A_V1系统 V2.0.272

环境湿度: 70%

测试距离: 8.425米 [K=1.0000]

备注:

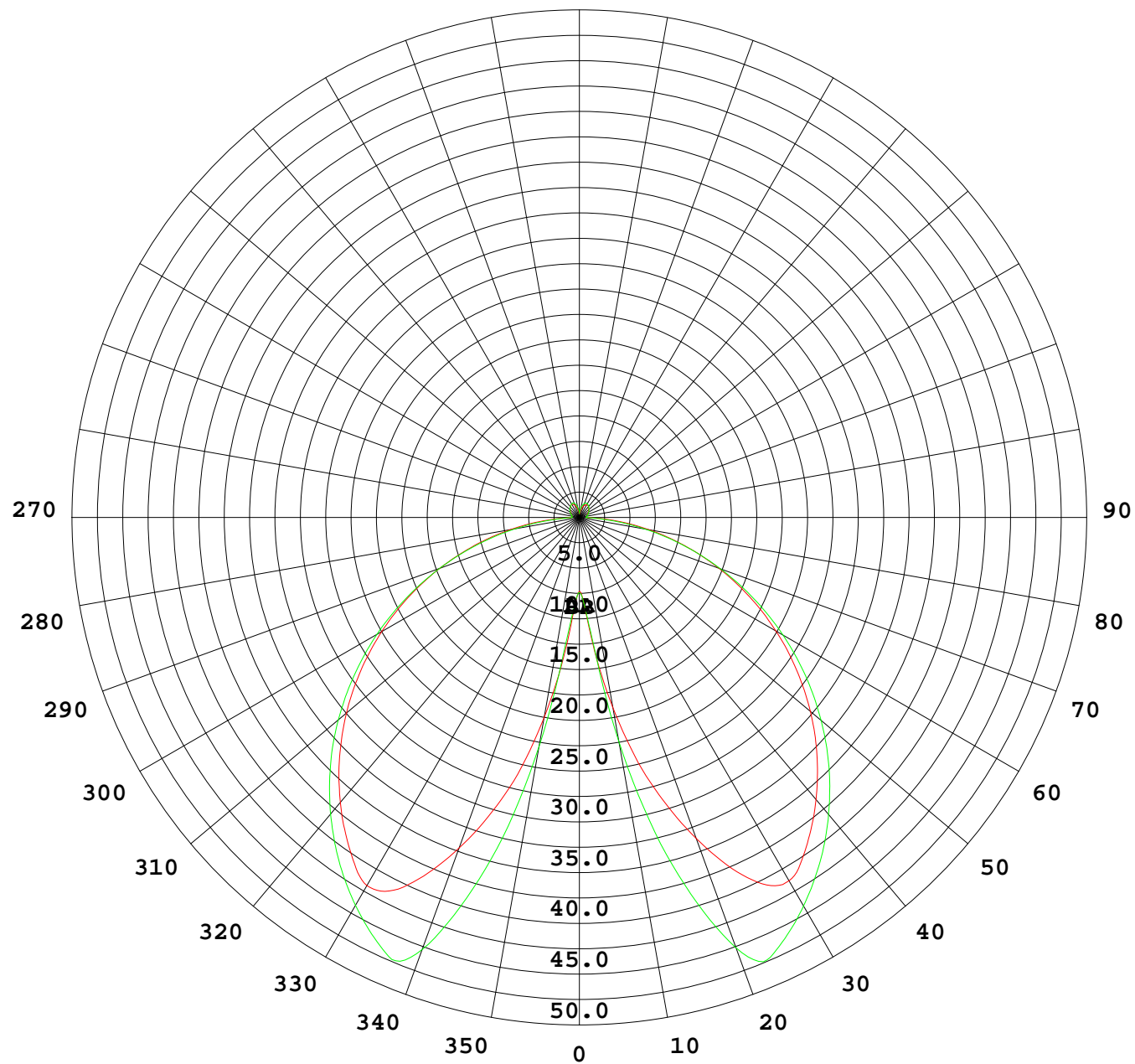
Photometric Data Table [cd]

G/C	350.0	355.0
0.0	7.289	7.293
2.5	8.247	8.333
5.0	11.16	11.37
7.5	15.44	15.65
10.0	19.80	19.99
12.5	24.17	24.32
15.0	28.18	28.20
17.5	31.66	31.56
20.0	34.91	34.70
22.5	37.82	37.53
25.0	40.09	39.91
27.5	41.49	41.45
30.0	41.70	41.77
32.5	40.78	40.84
35.0	39.44	39.49
37.5	38.01	38.04
40.0	36.51	36.51
42.5	34.95	34.94
45.0	33.33	33.30
47.5	31.63	31.59
50.0	29.87	29.83
52.5	28.09	28.04
55.0	26.23	26.18
57.5	24.35	24.30
60.0	22.43	22.37
62.5	20.50	20.44
65.0	18.53	18.49
67.5	16.56	16.51
70.0	14.59	14.54
72.5	12.61	12.57
75.0	10.66	10.62
77.5	8.722	8.689
80.0	6.827	6.802
82.5	4.983	4.953
85.0	3.181	3.165
87.5	1.473	1.465
90.0	0.7152	0.7337
92.5	0.7152	0.7154
95.0	0.7152	0.7152
97.5	0.7333	0.7152
100.0	0.7470	0.7152
102.5	0.7741	0.7287
105.0	0.8058	0.7515
107.5	0.8331	0.7830
110.0	0.8739	0.8194
112.5	0.9145	0.8556
115.0	0.9552	0.9008
117.5	0.9959	0.9506
120.0	1.037	0.9823
122.5	1.082	1.037
125.0	1.132	1.073
127.5	1.168	1.118
130.0	1.213	1.177
132.5	1.259	1.213
135.0	1.308	1.254
137.5	1.354	1.303
140.0	1.394	1.344
142.5	1.440	1.394
145.0	1.480	1.435
147.5	1.476	1.467
150.0	1.458	1.476
152.5	1.417	1.462
155.0	1.367	1.412
157.5	1.308	1.349
160.0	1.213	1.263
162.5	1.109	1.159
165.0	0.9866	1.032
167.5	0.8509	0.8967
170.0	0.7056	0.7611
172.5	0.5613	0.5934
175.0	0.4527	0.4937
177.5	0.3847	0.4256
180.0	0.3667	0.3667

C角度范围: 0度 - 360度
 C角度间隔: 5.0度
 测试速度: 快速
 环境温度: 25℃
 测试人员: yechihong
 测试日期: 2020-06-05

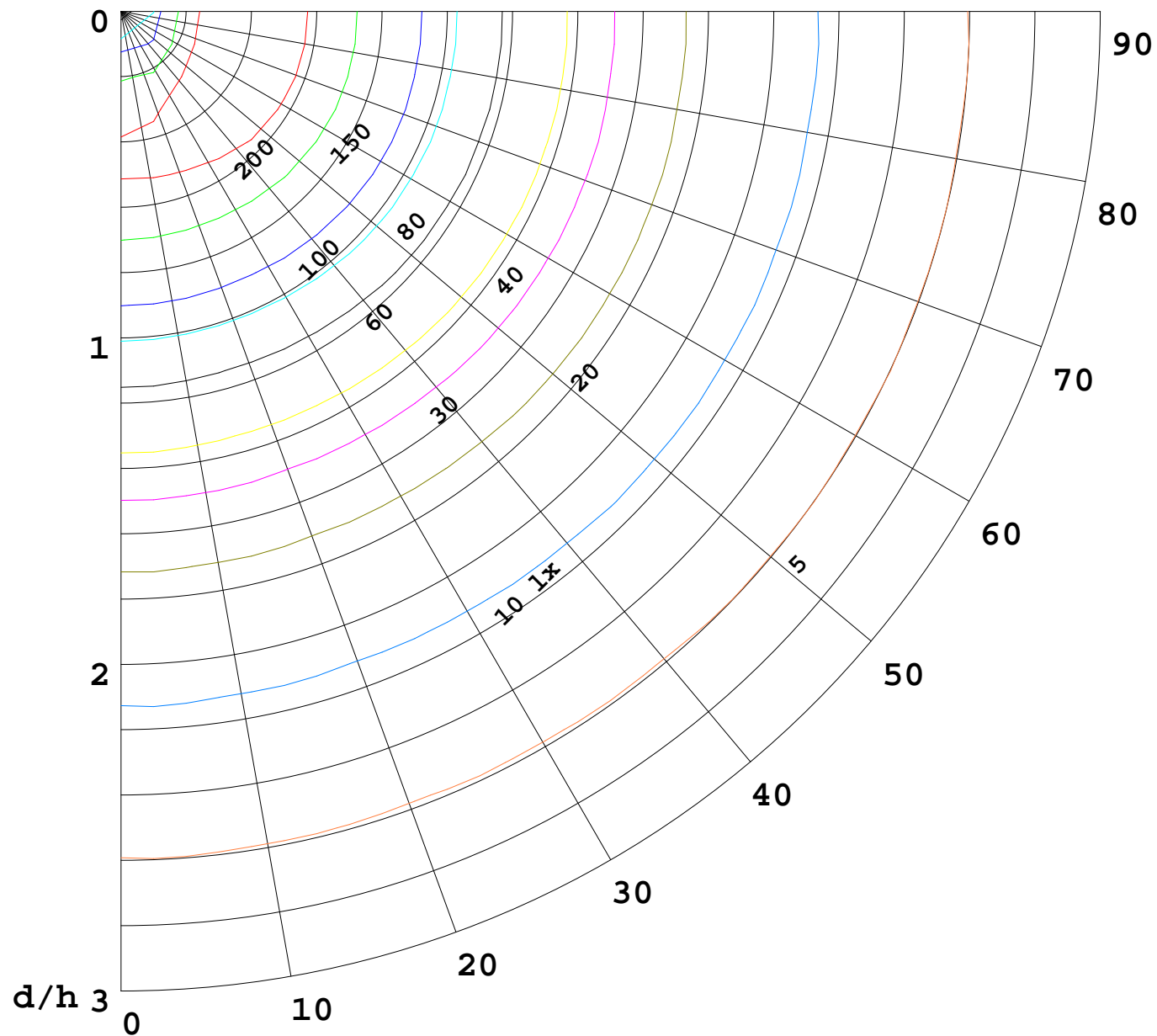
γ角度范围: 0度 - 180度
 γ角度间隔: 0.5度
 测试系统: 远方 (EVERFINE) GO-2000A_V1系统 V2.0.272
 环境湿度: 70%
 测试距离: 8.425米 [K=1.0000]
 备注:

I(cd)



1000 lm

$\kappa = 1$



F = 5000 lm
 K = 0.7
 Hcc = 0.0 m
 Hfc = 0.0 m
 Eave = 100 lx

	Pcc	Pw	Pfc
—————	70	50	30
—————	50	30	20

